

KLIPPON K52 M20ZCSS EX

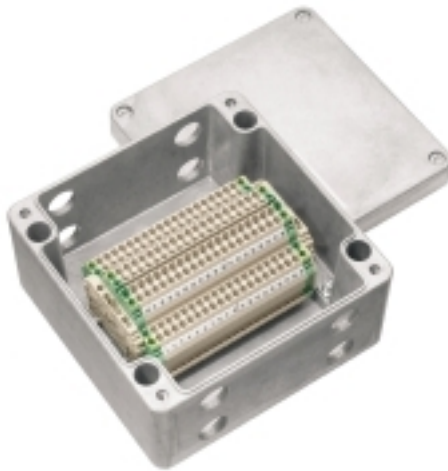
Weidmüller Interface GmbH & Co. KG

Klingenbergstraße 26

D-32758 Detmold

Germany

www.weidmueller.com



Various types of terminal boxes are available for installing signal / power supplies or distributors in explosive risk zones. The terminal boxes are explosion-protected equipment approved for use in Ex areas in zones 0, 1, 2 and 20, 21, 22. They are certified in accordance with the latest international standards Ex e, Ex ia and Ex tb. Customer-specific configuration means these terminal boxes are the optimum solution for all applications. Use the product overview to find the right solution for you! Combine the enclosure, with or without threaded holes, a suitable mounting rail or pre-fitted strip terminals. We have put together a small selection for you, but we are happy to configure a bespoke solution for you.

Features:

- Available in a wide range of versions to meet customer requirements
- Additional international approvals alongside IECEx, ATEX and EAC also available
- Increased quality thanks to the use of established basic products in the Klippon® brand

General ordering data

Version	Terminal Box, ATEX II 2GD T85°C Ex e II T6, KLIPPON K52 EX, KL SET 38Z2.5 S, Drill holes side A: 4 x M20x1.5, Drill holes side B: 4 x M20x1.5
Order No.	8000004221
Type	KLIPPON K52 M20ZCSS EX
GTIN (EAN)	4032248986453
Qty.	1 pc(s).
Reference product	9526950000

KLIPPON K52 M20ZCSS EX

Weidmüller Interface GmbH & Co. KG
 Klingenbergstraße 26
 D-32758 Detmold
 Germany

www.weidmueller.com

Technical data

Dimensions and weights

Net weight 2,100 g

Environmental Product Compliance

REACH SVHC Lead 7439-92-1

Certificate numbers enclosure

Certificate No. (EAC)	RUC-DE.BE02.B.00173	Certificate no. Terminal Box (ATEX)	IBExU12ATEX1145 X
Certificate no. Terminal Box (EAC)	RU C-DE.ГБ08.B.01328	Certificate no. Terminal Box (IECEX)	IECEX IBE 13.0002X

Housing

Drill holes side A	4 x M20x1.5	Drill holes side B	4 x M20x1.5
Material	Aluminium AlSi12		

Classifications

ETIM 6.0	EC002503	ETIM 7.0	EC002503
ECLASS 9.0	27-18-05-02	ECLASS 9.1	27-18-05-90
ECLASS 10.0	27-18-05-02	ECLASS 11.0	27-18-05-02

Approvals

Approvals



Downloads

Approval/Certificate/Document of Conformity [IBEXU12ATEX1145X](#)
[IECEXIBE13.0002X](#)

KLIPPON K52 M20ZCSS EX

Weidmüller Interface GmbH & Co. KG
Klingenbergstraße 26
D-32758 Detmold
Germany

www.weidmueller.com

Drawings

