

HS-HF 12.7-25.4/25 MM W

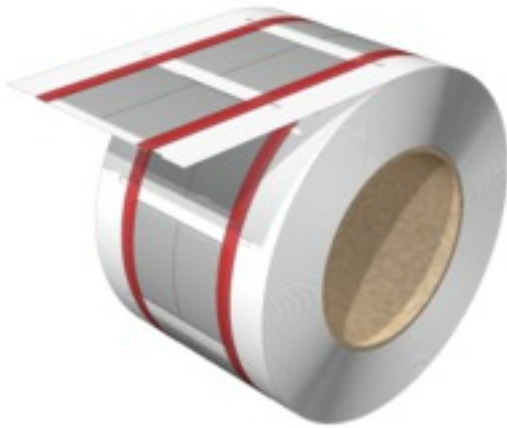
Weidmüller Interface GmbH & Co. KG

Klingenbergstraße 26

D-32758 Detmold

Germany

www.weidmueller.com



The heat-shrinkable sleeve is printable on 2 sides and can be used for marking and insulating cables and wires. The flexible, heat-shrink material enables a firm, perfect fit around the conductor and therefore saves space.

General ordering data

Version	Conductor and cable markers, 12.7 - 25.4 mm, {Reference (AttributeDefinition) not found: pAttr74196859207437}, white
Order No.	2437910000
Type	HS-HF 12.7-25.4/25 MM W
GTIN (EAN)	4050118460971
Qty.	400 pc(s).
compatible printer	2599430000 2599440000 1140490000

Creation date March 26, 2021 11:40:13 PM CET

Catalogue status 12.03.2021 / We reserve the right to make technical changes.

HS-HF 12.7-25.4/25 MM W

Weidmüller Interface GmbH & Co. KG

Klingenbergstraße 26

D-32758 Detmold

Germany

www.weidmueller.com

Technical data

Dimensions and weights

Depth	0.77 mm	Depth (inches)	0.03 inch
Height	25.4 mm	Height (inches)	1 inch
Net weight	1.6 g	Width	40.5 mm
Width (inches)	1.594 inch		

Temperatures

Operating temperature range	-55...105 °C
-----------------------------	--------------

General data

Colour	white	Halogen	No
Material	Polyolefine	Operating temperature range	-55...105 °C
Operating temperature range, max.	105 °C	Operating temperature range, min.	-55 °C
Width	40.5 mm		

Conductor and cable markers

Conductor O.D.	12.7 - 25.4 mm	Conductor O.D., max.	25.4 mm
Conductor O.D., min.	12.7 mm	Conductor cross-section, max.	120 mm ²
Conductor cross-section, min.	35 mm ²	Cross-section for connected wire	35 - 120 mm ²
Halogen	No	Rate of shrinkage	2:1
Recommended shrinking temperature	90 °C		

Classifications

ETIM 6.0	EC001530	ETIM 7.0	EC001530
ECLASS 9.0	27-40-04-01	ECLASS 9.1	27-40-04-01
ECLASS 10.0	27-40-04-01	ECLASS 11.0	27-28-11-02

Approvals

ROHS	Conform
------	---------

Downloads

Approval/Certificate/Document of Conformity	NFX 70-100-1 2006 + NF X 70-100-2 2006 BS EN 45545-2 2013+A1 2015 BS EN ISO 4589-2 1999
Engineering Data	EPLAN

Data sheet

HS-HF 12.7-25.4/25 MM W

Weidmüller Interface GmbH & Co. KG
Klingenbergstraße 26
D-32758 Detmold
Germany

www.weidmueller.com

Drawings

