



STEADY-LIGHT ELEMENTS,
GREEN AC/DC 24V...230V

General technical details:		
product brand name		SIRIUS
Product component / fluorescent materials		No
Design of the optical signal		continous light
Type of voltage		AC/DC
<ul style="list-style-type: none"> of operating voltage 		AC/DC
Operating voltage		
<ul style="list-style-type: none"> for DC / rated value 	V	240 ... 12
<ul style="list-style-type: none"> at 50 Hz / at AC / rated value 	V	12 ... 240
<ul style="list-style-type: none"> at 60 Hz / at AC / rated value 	V	12 ... 240
Reference code		P
<ul style="list-style-type: none"> according to DIN EN 61346-2 		P
Mechanical design:		
Mounting type		Bayonet
External diameter / of the signal column element	mm	50
Lamp:		
Nature of fluorescent material		filament lamp / LED
Ambient conditions:		

Ambient temperature		
• during operating	°C	-20 ... +60
Protection class IP		IP54
Height	mm	67
Width	mm	52

Certificates/approvals:

General Product Approval	EMC	Declaration of Conformity	Shipping Approval
	 UL	 C-TICK	 EG-Konf.
			 DNV

Further information:

Information- and Downloadcenter (Catalogs, Brochures,...)

<http://www.siemens.com/industrial-controls/catalogs>

Industry Mall (Online ordering system)

<http://www.siemens.com/industrial-controls/mall>

Cax online generator:

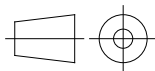
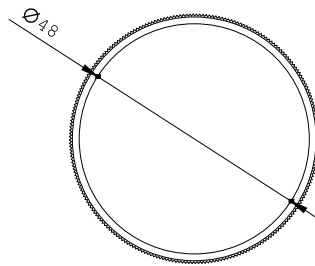
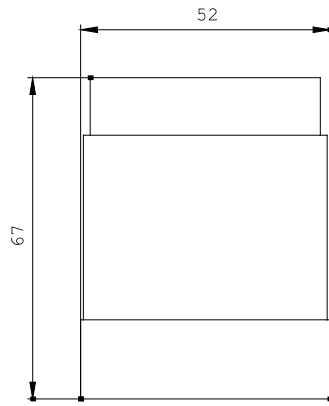
<http://www.siemens.com/cax>

Service&Support (Manuals, Certificates, Characteristics, FAQs,...)

<http://support.automation.siemens.com/WW/view/en/8WD4200-1AC/all>

Image database (product images, 2D dimension drawings, 3D models, device circuit diagrams, ...)

http://www.automation.siemens.com/bilddb/cax_en.aspx?mlfb=8WD4200-1AC



\W9.4444;
\W6.8611; 8WD

last change:

Jun 16, 2014