



SIMATIC ET200PRO PS STABILIZED POWER SUPPLY  
 DEGREE OF PROTECTION IP67 INPUT: 400-480 V 3 AC  
 OUTPUT: 24 V DC / 8 A

### Technical specifications

Product	SIMATIC ET200pro PS
Power supply, type	24 V/8 A
<b>Input</b>	
Input	3-phase AC
Rated voltage value $V_{in}$ rated	400 ... 480 V
Voltage range	340 ... 550 V
• Note	320 ... 340 V for max. 1 min
Wide-range input	Yes
Overvoltage resistance	Implemented internally with varistors
Mains buffering at $I_{out}$ rated, min.	15 ms
Mains buffering	at $V_{in} = 400$ V
Rated line frequency	50 / 60 Hz
Rated line range	45 ... 66 Hz
Input current / at nominal level of the input voltage 400 V	0.5 A
Switch-on current limiting (+25 °C), max.	40 A
$I^2t$ , max.	3.5 A <sup>2</sup> ·s
Built-in incoming fuse	internal, 4 A
Protection in the mains power input (IEC 898)	Required: Circuit breaker 2.2 ... 3.2 A 3RV2011-1DA10 or 3RV2711-1DD10 (UL 489)

### Output

Output	Controlled, isolated DC voltage
Rated voltage Vout DC	24 V
Total tolerance, static ±	3 %
Static mains compensation, approx.	0.5 %
Static load balancing, approx.	0.5 %
Residual ripple peak-peak, max.	200 mV
Spikes peak-peak, max. (bandwidth: 20 MHz)	250 mV
Product feature / output voltage adjustable	No
Output voltage setting	-
Status display	Green LED for 24 V OK
Signaling	max. 30 V, 10 mA; Power-Good (High-Pegel 1L+ for Vout in range 21.3 ... 29 V); Overtemperature warning at least 30 s before switch-off (high level 1L+ when the max. internal temperature is exceeded)
On/off behavior	Overshoot of Vout < 2 %
Startup delay, max.	1.5 s
Voltage rise, typ.	40 ms
Rated current value Iout rated	8 A
Current range	0 ... 8 A
delivered active power / typ.	192 W
short-term overload current / at short-circuit during run-up / typical	50 A
Duration of overloading ability for excess current / on short-circuiting during the start-up	100 ms
short-term overload current / at short-circuit during operation / typical	50 A
Duration of overloading ability for excess current / on short-circuiting during the operational phase	100 ms
Parallel switching for enhanced performance	No
<b>Efficiency</b>	
Efficiency at Vout rated, Iout rated, approx.	88 %
Power loss at Vout rated, Iout rated, approx.	25 W
<b>Closed-loop control</b>	
Dynamic mains compensation (Vin rated ±15 %), max.	0.5 %
Dynamic load smoothing (Iout: 50/100/50 %), Uout ± typ.	1 %
Setting time / maximum	2 ms
<b>Protection and monitoring</b>	
Output overvoltage protection	< 33 V
Current limitation, typ.	9.4 A
Characteristic feature of the output / short-circuit protected	Yes
Short-circuit protection	Electronic shutdown, automatic restart
Enduring short circuit current / Effective level / maximum	10 A
Overload/short-circuit indicator	-

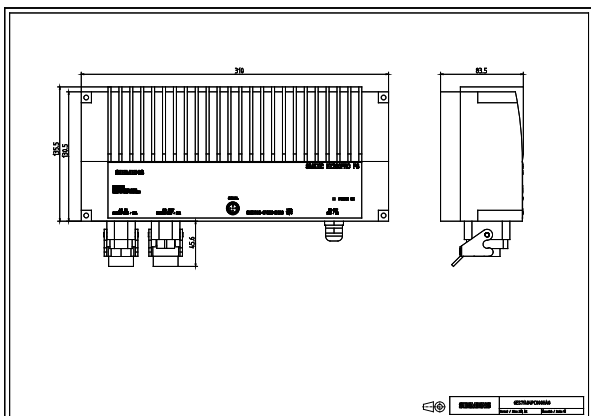
<b>Safety</b>	
Primary/secondary isolation	Yes
Potential separation	Protective extra low output voltage $V_{out}$ according to EN 60950-1 and EN 50178
Protection class	Class I
stray current / maximum	3.5 mA
stray current / typical	0.4 mA
CE mark	Yes
UL/CSA approval	No
UL/cUL (CSA) approval	in preparation UL-Listed (UL 508)
Explosion protection	-
FM approval	-
CB approval	Yes
Marine approval	-
Degree of protection (EN 60529)	IP67, enclosure type 4 indoor
<b>EMC</b>	
Emitted interference	EN 55022 Class A
Supply harmonics limitation	-
Noise immunity	EN 61000-6-2
<b>Operating data</b>	
Ambient temperature / in operation	-25 ... +55 °C
• Note	with natural convection
Ambient temperature / on transport	-40 ... +70 °C
Ambient temperature / in storage	-40 ... +70 °C
Humidity class according to EN 60721	Climate class 3K3, no condensation
<b>Mechanics</b>	
Connection technology	screw-type terminals
Connections / Supply input	L1, L2, L3, PE: Plug connector HAN Q4/2
Connections / Output	L+, M: 2 x 1.5 mm <sup>2</sup> each (4-pole cable for +/- with open, labeled ends, 4 x 1.5 mm <sup>2</sup> )
Connections / Auxiliary	Alarm signals: M12 plug-in connector 5-pin
Width / of the housing	310 mm
Height / of the housing	135 mm
Depth / of the housing	90 mm
Weight, approx.	2.8 kg
Product feature / of the housing / housing for side-by-side mounting	No
Type of mounting / wall mounting	Yes
Type of fixing / cap rail mounting	No
Type of mounting / S7-300 rail mounting	No
Installation	Can be mounted onto ET200pro mounting rail

Electrical accessories

Power connector (Input: 3RK1911-2BE30 (6 mm<sup>2</sup>)) (Output: 3RK1911-2BF10 (4 mm<sup>2</sup>))

Other information

Specifications at rated input voltage and ambient temperature +25 °C (unless otherwise specified)



letzte Änderung:

Jul 25, 2012