

SIEMENS

Data sheet for SIMOTICS S-1FG1

MLFB-Ordering data 1FG1103-1QF33-2AA1-Z
D01+K06+N23



Figure similar

Client order no. :

Order no. :

Offer no. :

Remarks :

Item no. :

Consignment no. :

Project :

Gearbox data

Gear box type Z39

Gearbox basic type Helical geared

Gearbox size 39

Transmission stages 2

Transmission (ratio) 3.43

Gear number relation 1891/552

Output moment maximum (short-time) 112 Nm

max. input speed (briefly) 4500 rpm

Output speed short-time 1312 rpm

Emergency off output moment (1000 cycles) 190 Nm

Radial force maximum 475 N

Max. permissible radial force with Mmax 475 N

Moment of inertia 1.70 kgcm²

Torsional stiffness 9 Nm/°

Efficiency 0.97

Mounting position M1

Mounting type Foot-mounted

Output shaft version Solid shaft standard

Output shaft dimension V25x50 mm

Gearbox flange diameter -/-

Output shaft bearing No

Figure 2 torque support -

General tech. specifications

Degree of protection IP65

Color of the housing Standard painting
(Anthracite RAL 7016)

Specification CE / UL / CSA / EAC / cRUus

Net weight 25.56 kg

1m-sound pressure level L_{pA} (Tol.+3dB(A)) 75

Plug position top (default) (2)

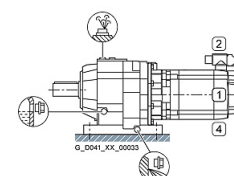
Adapter flange position top (default) (2)

Lubrication and sealing

Gear oil Mineral oil CLP ISO VG220

Output shaft sealing Standard

Oil charge 0.30 l



SIEMENS

Data sheet for SIMOTICS S-1FG1

MLFB-Ordering data 1FG1103-1QF33-2AA1-Z
D01+K06+N23

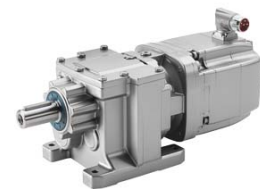


Figure similar

Motor data		Limiting data	
Motor type	Permanent-magnet synchronous motor	Maximum speed (short-time)	6000 rpm
Motor type	Compact	Maximum torque	50.00 Nm
DC-link voltage, max.	510...720V	Motor current short term	37.0 A
Shaft height	80 mm	Optimum operating point	
Cooling	Natural cooling	Optimum speed	3000 rpm
Rated speed	3000 rpm	Optimum power	2.95 kW
Rated torque (100K)	9.40 Nm	Recommended Motor Module	
Rated power	2.95 kW	Rated inverter current	9.0 A
Rated current (100K)	6.50 A	Maximum inverter current	27.0 A
Static torque	15.50 Nm	Maximum torque	40.0 Nm
Static current	9.90 A	Holding brake	
Moment of inertia	29.50000 kgcm ²	Holding brake	with holding brake
Efficiency η	93 %	Holding brake version	Permanent-magnet brake
Temperature monitoring	Pt1000 temperature sensor	Power supply voltage	DC 24 V \pm 10 %
Connector size	1	Braking torque M_{1Br} / M_{2Br}	11.00 Nm
Encoder system	Encoder AS20DQI: absolute encoder single-turn 20 bits	Holding torque M_{4Br}	22.00 Nm
		Opening time	200.0 ms
		Closing time	60.0 ms
		Maximum switching energy per braking action	1400.0 J

Info servo geared motor

Outside the standard temperature range of -10 to +40 °C, further selectable options must be observed, in addition to the lubricant selection.

Further, you have to check the suitability of the components and options used for the requested temperature range.

SIEMENS

Data sheet for SIMOTICS S-1FG1

MLFB-Ordering data

1FG1103-1QF33-2AA1-Z
D01+K06+N23



Figure similar

Options		Standards	
D01	M1 for helical and parallel shaft gearboxes	Compliance with standards	CE / UL / CSA / EAC / cRUus
K06	Mineral oil CLP ISO VG220		
N23	Standard holding brake (permanent magnet brake)		
		CE marking	EN 60034