

Figure similar

MLFB-Ordering data 1FG1505-1PC43-1AU1-Z
D11+K06+N23

Client order no. :

Order no. :

Offer no. :

Remarks :

Item no. :

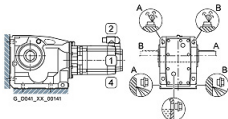
Consignment no. :

Project :

Gearbox data			
Gear box type		K49	
Gearbox basic type		Bevel geared	
Gearbox size		49	
Transmission stages		3	
Transmission (ratio)		49.82	
Gear number relation		5928/119	
Output moment maximum (short-time)		300 Nm	
max. input speed (briefly)		4500 rpm	
Output speed short-time		90 rpm	
Emergency off output moment (1000 cycles)		710 Nm	
Radial force maximum		5510 N	
Max. permissible radial force with Mmax		5510 N	
Moment of inertia		0.50 kgcm²	
Torsional stiffness		41 Nm/°	
Efficiency		0.93	
Mounting position		M1-A	
Mounting type		Foot-mounted	
Output shaft version		Solid shaft standard	
Output shaft dimension		V30x60 mm	
Gearbox flange diameter		-/-	

Figure 2 torque support -

General tech. specifications		Lubrication and sealing	
Degree of protection		IP65	
Color of the housing		Standard painting (Anthracite RAL 7016)	
Specification		CE / UL / CSA / EAC / cRUus	
Net weight		24.06 kg	
1m-sound pressure level L _{pA} (Tol.+3dB(A))		65	
Plug position		top (default) (2)	
Adapter flange position		top (default) (2)	
Gear oil		Mineral oil CLP ISO VG220	
Output shaft sealing		Standard	
Oil charge		0.55 l	



SIEMENS

Data sheet for SIMOTICS S-1FG1

MLFB-Ordering data 1FG1505-1PC43-1AU1-Z
D11+K06+N23



Figure similar

Motor data		Limiting data	
Motor type	Permanent-magnet synchronous motor	Maximum speed (short-time)	10000 rpm
Motor type	Compact	Maximum torque	6.50 Nm
DC-link voltage, max.	270...300V	Motor current short term	8.0 A
Shaft height	36 mm	Optimum operating point	
Cooling	Natural cooling	Optimum speed	3000 rpm
Rated speed	3000 rpm	Optimum power	0.36 kW
Rated torque (100K)	1.16 Nm	Recommended Motor Module	
Rated power	0.37 kW	Rated inverter current	2.3 A
Rated current (100K)	1.50 A	Maximum inverter current	4.6 A
Static torque	1.40 Nm	Maximum torque	3.9 Nm
Static current	1.69 A	Holding brake	
Moment of inertia	1.00000 kgcm ²	Holding brake	with holding brake
Efficiency η	87 %	Holding brake version	Permanent-magnet brake
Temperature monitoring	Pt1000 temperature sensor	Power supply voltage	DC 24 V \pm 10 %
Connector size	1	Braking torque M_{1Br} / M_{2Br}	1.00 Nm
Encoder system	Resolver R14DQ: resolver 14 bits (resolution 16384, internal 2-pole)	Holding torque M_{4Br}	1.90 Nm
		Opening time	50.0 ms
		Closing time	30.0 ms
		Maximum switching energy per braking action	40.0 J

Info servo geared motor

Outside the standard temperature range of -10 to +40 °C, further selectable options must be observed, in addition to the lubricant selection.

Further, you have to check the suitability of the components and options used for the requested temperature range.

MLFB-Ordering data 1FG1505-1PC43-1AU1-Z
D11+K06+N23

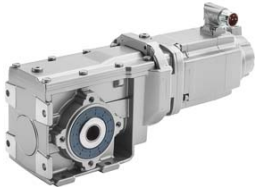


Figure similar

Options		Standards	
D11	M1-A for bevel and worm gearboxes	Compliance with standards	CE / UL / CSA / EAC / cRUus
K06	Mineral oil CLP ISO VG220		
N23	Standard holding brake (permanent magnet brake)		
		CE marking	EN 60034