

Data sheet for SIMOTICS S-1FK7

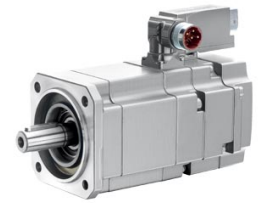


Figure similar

MLFB-Ordering data

1FK7015-5AK71-1JB3

Client order no. :

Order no. :

Offer no. :

Remarks :

Item no. :

Consignment no. :

Project :

Engineering data		Mechanical data	
Rated speed (100 K)	6000 rpm	Motor type	Permanent-magnet synchronous motor
Number of poles	8	Motor type	Compact
Rated torque (100 K)	0.2 Nm	Shaft height	20
Rated current	0.8 A	Cooling	Natural cooling
Static torque (60 K)	0.29 Nm	Radial runout tolerance	0.000 mm
Static torque (100 K)	0.3 Nm	Concentricity tolerance	0.00 mm
Stall current (60 K)	1.20 A	Axial runout tolerance	0.00 mm
Stall current (100 K)	1.50 A	Vibration severity grade	Grade A
Moment of inertia	0.102 kgcm ²	Connector size	0.5
Efficiency	68.0 %	Degree of protection	IP54
Physical constants		Design acc. to Code I	IM B5 (IM V1, IM V3)
		Temperature monitoring	KTY84 temperature sensor in the stator winding
Torque constant	0.42 Nm/A	Electrical connectors	Connectors for signals and power rotatable
Voltage constant at 20° C	16.0 V/1000*min ⁻¹	Color of the housing	Standard (Anthracite RAL 7016)
Winding resistance at 20° C	4.30 Ω	Holding brake	with holding brake
Rotating field inductance	8.4 mH	Shaft extension	Feather key
Electrical time constant	2.00 ms	Encoder system	Encoder AM16S/R: absolute encoder 16 S/R, 4096 revolutions multi-turn, with EnDat interface
Mechanical time constant	1.90 ms		
Thermal time constant	16 min		
Shaft torsional stiffness	1300 Nm/rad		
Net weight of the motor	1.2 kg		

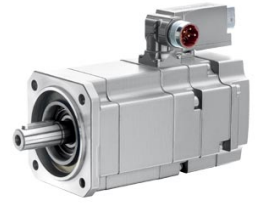


Figure similar

MLFB-Ordering data

1FK7015-5AK71-1JB3

Optimum operating point

Optimum speed	5000 rpm
Optimum power	0.1 kW

Limiting data

Max. permissible speed (mech.)	8000 rpm
Max. permissible speed (inverter)	8000 rpm
Maximum torque	1.0 Nm
Maximum current	4.2 A

Holding brake

Holding brake version	Permanent-magnet brake
Holding torque	0.4 Nm
Power supply voltage	DC 24 V \pm 10 %
Coil current	0.3 A
Opening time	30 ms
Closing time	20 ms
Highest braking work	2 J

Recommended Motor Module

Rated inverter current	3 A
Maximum inverter current	6 A
Maximum torque	1.00 Nm