

Figure similar

MLFB-Ordering data 1FG1501-1RE03-2FF1-Z  
D14+G23+K07+N23

Client order no. :

Order no. :

Offer no. :

Remarks :

Item no. :

Consignment no. :

Project :

### Gearbox data

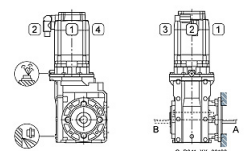
<b>Gear box type</b>	B29	<b>Radial force maximum</b>	3100 N
<b>Gearbox basic type</b>	Bevel geared	<b>Max. permissible radial force with Mmax</b>	3150 N
<b>Gearbox size</b>	29	<b>Moment of inertia</b>	0.50 kgcm <sup>2</sup>
<b>Transmission stages</b>	2	<b>Torsional stiffness</b>	12 Nm/°
<b>Transmission (ratio)</b>	6.51	<b>Efficiency</b>	0.93
<b>Gear number relation</b>	644/99	<b>Mounting position</b>	M4-A
<b>Output moment maximum (short-time)</b>	75 Nm	<b>Mounting type</b>	Flange version (A type)
<b>max. input speed (briefly)</b>	4500 rpm	<b>Output shaft version</b>	Solid shaft standard
<b>Output speed short-time</b>	691 rpm	<b>Output shaft dimension</b>	V20x40 mm
<b>Emergency off output moment (1000 cycles)</b>	127 Nm	<b>Gearbox flange diameter</b>	120 mm
		<b>Output shaft bearing</b>	No
		<b>Figure 2 torque support</b>	-

### General tech. specifications

<b>Degree of protection</b>	IP65
<b>Color of the housing</b>	Standard painting (Anthracite RAL 7016)
<b>Specification</b>	CE / UL / CSA / EAC / cRUus
<b>Net weight</b>	14.89 kg
<b>1m-sound pressure level L<sub>pA</sub> (ToI.+3dB(A))</b>	70
<b>Plug position</b>	top (default) (2)
<b>Adapter flange position</b>	top (default) (2)

### Lubrication and sealing

<b>Gear oil</b>	Polyglycol oil CLP ISO PG VG220
<b>Output shaft sealing</b>	Seal longer service life
<b>Oil charge</b>	0.85 l



MLFB-Ordering data 1FG1501-1RE03-2FF1-Z  
D14+G23+K07+N23

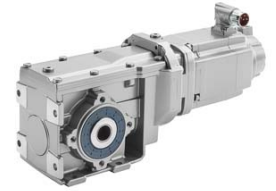


Figure similar

Motor data		Limiting data	
Motor type	Permanent-magnet synchronous motor	Maximum speed (short-time)	7200 rpm
Motor type	Compact	Maximum torque	18.00 Nm
DC-link voltage, max.	510...720V	Motor current short term	15.0 A
Shaft height	63 mm	<b>Optimum operating point</b>	
Cooling	Natural cooling	Optimum speed	3000 rpm
Rated speed	3000 rpm	Optimum power	1.25 kW
Rated torque (100K)	3.95 Nm	<b>Recommended Motor Module</b>	
Rated power	1.24 kW	Rated inverter current	5.0 A
Rated current (100K)	3.25 A	Maximum inverter current	15.0 A
Static torque	5.30 Nm	Maximum torque	18.0 Nm
Static current	4.05 A	<b>Holding brake</b>	
Moment of inertia	8.70000 kgcm <sup>2</sup>	Holding brake	with holding brake
Efficiency $\eta$	91 %	Holding brake version	Permanent-magnet brake
Temperature monitoring	Pt1000 temperature sensor	Power supply voltage	DC 24 V $\pm$ 10 %
Connector size	1	Braking torque $M_{1Br} / M_{2Br}$	8.50 Nm
Encoder system	Encoder AM20DQI: absolute encoder 20 bits (resolution 1048576, encoder-internal 512 S/R) + 12 bits multi-turn (traversing range 4096 revolutions)	Holding torque $M_{4Br}$	13.00 Nm
		Opening time	100.0 ms
		Closing time	50.0 ms
		Maximum switching energy per braking action	380.0 J

### Info servo geared motor

Outside the standard temperature range of -10 to +40 °C, further selectable options must be observed, in addition to the lubricant selection.

Further, you have to check the suitability of the components and options used for the requested temperature range.

MLFB-Ordering data 1FG1501-1RE03-2FF1-Z  
D14+G23+K07+N23

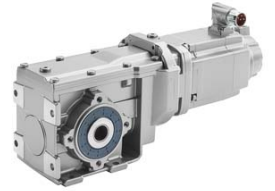


Figure similar

### Options

D14	M4-A for bevel and worm gearboxes
G23	Seal longer service life
K07	Polyglycol oil CLP ISO PG VG220
N23	Standard holding brake (permanent magnet brake)

### Standards

**Compliance with standards** CE / UL / CSA / EAC / cRUus

**CE marking** EN 60034