

FIXED-MOUNTED CIRCUIT BREAKER 3-POLE,
 SIZE I, IEC IN=1250A TO 690V,
 AC50/60HZ ICU=55KA AT 500V FRNT.CONN. TOP/BOT.
 DUAL-HOLE ELECTRONIC TRIP UNIT ETU 15 LI PROT.
 ADJUST.B. 0.5-1 IN MOT./MAN. OPER.MECHAN.
 W.STOR. DRIVE MOTOR AC 50/60HZ 208-240V BZW DC
 220-250V REQU. AC 50/60HZ 230V,
 DC 220V WITHOUT 1ST SHUNT TRIP WITH 2ND AUX.
 RELEASE "R",
 F3 UNDERVOLTAGE, NON-DEL. AC 208-240V,
 DC 220-250V 2NO+2NC

General technical data:

Ambient temperature		
• during operating	°C	-20 ... +70
• during storage	°C	-40 ... +70
Protection class IP		IP20
Reference code / according to DIN EN 61346-2		Q
Mounting type		fixed mounting
Number of poles		3
Size of the circuit-breaker		1

Main circuit:

Arrangement of electrical connectors / for main current circuit		Main connection top front/bottom double hole
Design of the electrical connection / for main current circuit		busbar connection
Continuous current / rated value	A	1,250
Operating current		
• at 50 °C / rated value	A	1,250
• at 55 °C / rated value	A	1,250
• at 60 °C / rated value	A	1,250
• at 65 °C / rated value	A	1,250
• at 70 °C / rated value	A	1,210

Operating voltage / at 50/60 Hz / for AC / rated value	V	690
Insulation voltage / rated value	V	1,000
Active power loss / maximum	W	105

Short-circuit:

Breaking capacity limit short-circuit current (I_{cu})		
• at 500 V / rated value	kA	55
• at 690 V / rated value	kA	42
Breaking capacity operating short-circuit current (I_{cs})		
• at 500 V / rated value	kA	55
• at 690 V / rated value	kA	42
Short-time withstand current (I_{cw})		
• restricted to 0.5 s / rated value	kA	55
• limited to 1 s / rated value	kA	42
• restricted to 2 s / rated value	kA	29.5
• restricted to 3 s / rated value	kA	24
Ultimate short-circuit current making capacity (I_{cm})		
• at 500 V / rated value	kA	121
• at 690 V / rated value	kA	88

Overcurrent Release:

Design of the overcurrent release		ETU15B
Type of display		without display
Protective function of the overcurrent release		LI

Auxiliary circuit:

Number of NO contacts / for auxiliary contacts		2
Number of NC contacts / for auxiliary contacts		2
Product component		
• undervoltage release mechanism		Yes
• Voltage trigger		No
Product function / phase disturbance recognition		No

Certificates/approvals:

General Product Approval

Declaration of Conformity



CB



CCC



GOST

[other](#)



VDE



EG-Konf.

Test Certificates

[Special Test Certificate](#)

Shipping Approval



ABS



DNV



GL



LRS



PRS



RMRS

other

[other](#)

[Environmental Confirmations](#)

Further information:

Information- and Downloadcenter (Catalogs, Brochures,...)

<http://www.siemens.com/lowvoltage/catalogs>

Industry Mall (Online ordering system)

<https://eb.automation.siemens.com/mall/en/WW/Catalog/Product/3WL1112-2BB34-4AN2>

Service&Support (Manuals, Certificates, Characteristics, FAQs,...)

<http://support.automation.siemens.com/WW/view/en/3WL1112-2BB34-4AN2/all>

Image database (product images, 2D dimension drawings, 3D models, device circuit diagrams, ...)

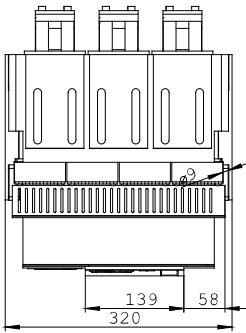
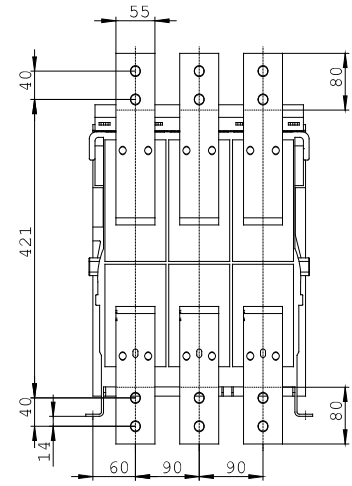
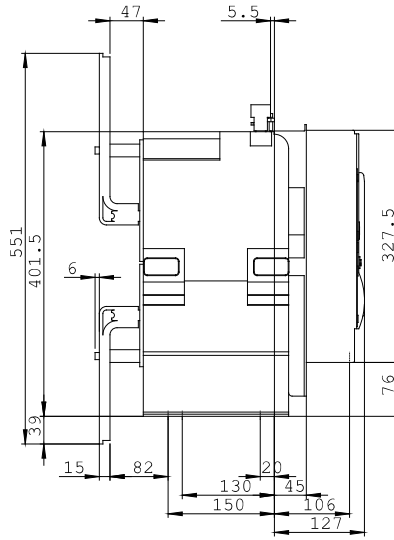
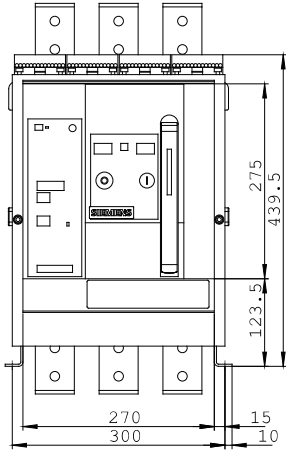
http://www.automation.siemens.com/bilddb/cax_en.aspx?mlfb=3WL1112-2BB34-4AN2

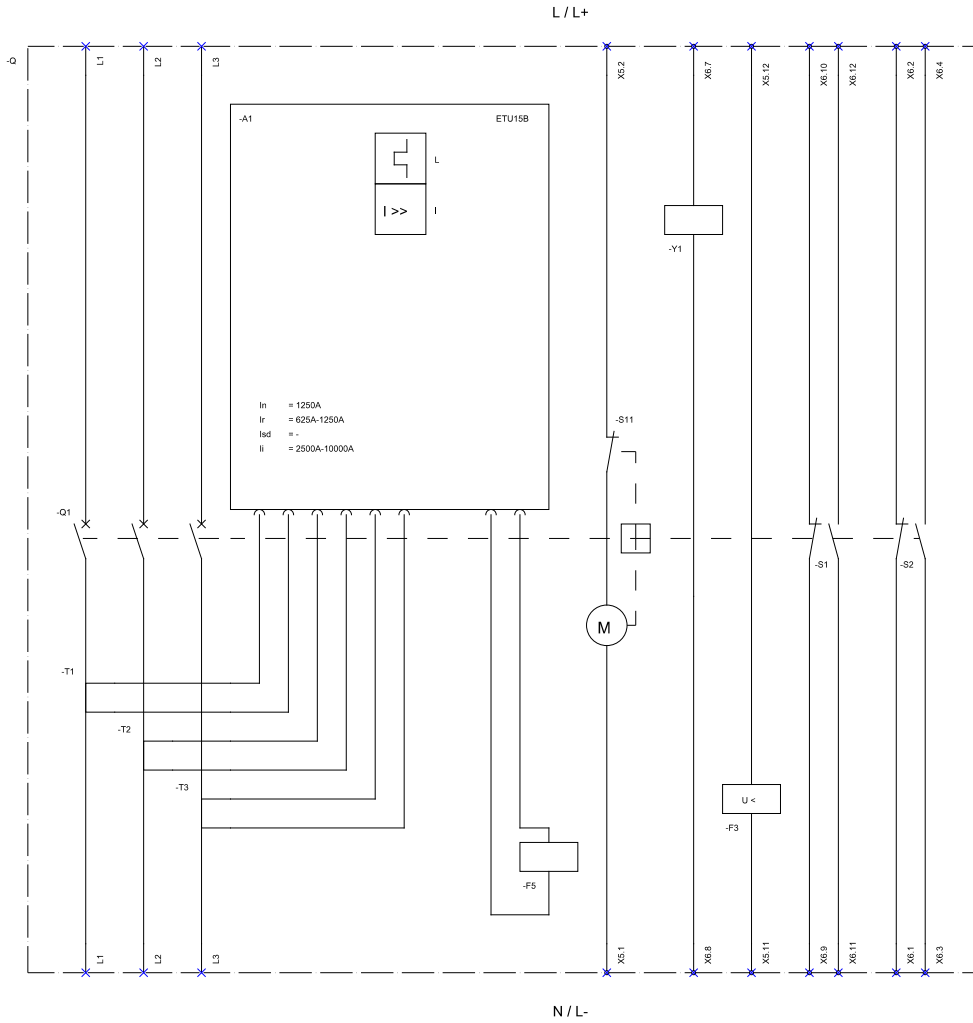
CAX-Online-Generator

<http://www.siemens.com/cax>

Tender specifications

[Datanorm GAEB81](#) [GAEB83](#) [RTF](#) [TXT](#)





I (Long Time Delay / Überlastschutz): I (Instantaneous / Kurzschlusschutz, unversorgelt);
 S11 (Internal motor shutdown switch, if spring is tensioned / Interner Motorschaltelchalter, wenn Feder gespannt); F3 (Undervoltage release / Unterspannungsauslöser);
 F5 (Magnet for trip unit / Auslösemagnet); S1 - S8 (Auxiliary switch / Hilfschalter); Y1 (Closing coil / Einschaltmagnet);

last change:

Sep 10, 2014