

# UHF Transponder, square, on-metal, global

RFID transponders

RFID

**SICK**  
Sensor Intelligence.



## Ordering information

Type	Part no.
UHF Transponder, square, on-metal, global	6052186

Other models and accessories → [www.sick.com/RFID\\_transponders](http://www.sick.com/RFID_transponders)

## Detailed technical data

### Features

<b>Type</b>	Hardtag
<b>Frequency band</b>	UHF (860 MHz ... 960 MHz)
<b>Carrier frequency</b>	865 MHz ... 928 MHz
<b>RFID standard</b>	EPCglobal UHF Class 1 Generation 2, ISO/IEC 18000-6 C
<b>Read range</b>	
	RFU61x 10 cm <sup>1)</sup>
	RFU62x 40 cm <sup>1)</sup>
	RFU63x/RFU65x 200 cm <sup>1)</sup>
<b>IC type</b>	Impinj Monza 4QT
<b>IC capacity</b>	128/512 Bit
<b>IC write cycle</b>	≤ 100,000
<b>IC data retention time</b>	< 50 years
<b>On Metal</b>	✓ <sup>2)</sup>

<sup>1)</sup> Typical value; actual value depends on environmental conditions.

<sup>2)</sup> For optimal performance the transponder must be mounted directly onto metal. The metal surface must be of at least the same size as the transponder.

### Mechanics/electronics

<b>Housing</b>	Plastic
<b>Housing color</b>	Gray
<b>Enclosure rating</b>	IP68
<b>Weight</b>	+ 22 g
<b>Dimensions (L x W x H)</b>	27 mm x 27 mm x 6 mm
<b>Hole</b>	3.5 mm
<b>Design</b>	Rectangular
<b>Mounting method</b>	Screws, riveting

### Ambient data

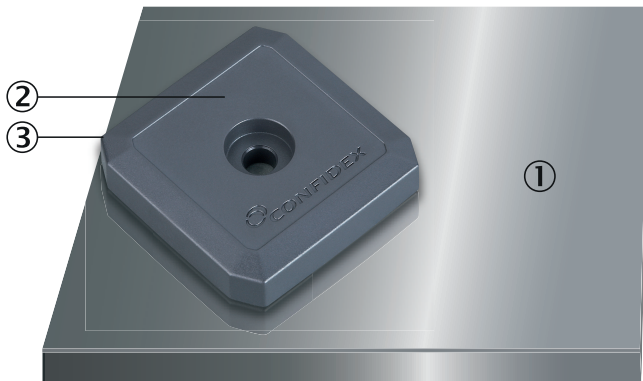
<b>Ambient operating temperature</b>	-35 °C ... +85 °C
<b>Storage temperature</b>	-35 °C ... +85 °C

### Classifications

<b>ECl@ss 5.0</b>	27280402
-------------------	----------

<b>ECI@ss 5.1.4</b>	27280402
<b>ECI@ss 6.0</b>	27280402
<b>ECI@ss 6.2</b>	27280402
<b>ECI@ss 7.0</b>	27280402
<b>ECI@ss 8.0</b>	27280402
<b>ECI@ss 8.1</b>	27280402
<b>ECI@ss 9.0</b>	27280402
<b>ECI@ss 10.0</b>	27280402
<b>ECI@ss 11.0</b>	27280402
<b>ETIM 6.0</b>	EC002998
<b>ETIM 7.0</b>	EC002998
<b>UNSPSC 16.0901</b>	52161523

## Assembly note



- ① Leave the mounting surface in this area near to the transponder free. Free surface should be metal.
- ② Mounting on even metal surface with full contact of the underside of the transponder on the metal.
- ③ Position the top left corner of the transponder near to the edge of the mounting surface.

## Recommended services

Additional services → [www.sick.com/RFID\\_transponders](http://www.sick.com/RFID_transponders)

	Type	Part no.
Commissioning		
<ul style="list-style-type: none"> <li>• <b>Product area:</b> RFID</li> <li>• <b>Range of services:</b> Inspection of connection, alignment, optimization of parameters of the RFU/RFH as well as tests, Setup of previously defined functions of reading configuration, data processing and network, interfaces and inputs and outputs</li> <li>• <b>Travel expenses:</b> The prices do not include travel costs such as hotel, flight, travel time and expenses.</li> <li>• <b>Duration:</b> Additional work will be invoiced separately</li> </ul>	Commissioning RFU/RFH	1610018

	Type	Part no.
Product, system, and software training		
<ul style="list-style-type: none"> <li>• <b>Range of services:</b> The training contents are geared toward the RFID read/write devices, Training format and location can be worked out in collaboration with SICK, SICK offers training courses for numerous target groups ranging from basic to expert levels</li> </ul>	RFH/RFU training	1612233
Maintenance		
<ul style="list-style-type: none"> <li>• <b>Product area:</b> RFID</li> <li>• <b>Range of services:</b> Inspection, analysis and restoring of defined functions, Checking and adjustment of reading configuration, data processing, network, interfaces and inputs and outputs as well as operating data</li> <li>• <b>Travel expenses:</b> The prices do not include travel costs such as hotel, flight, travel time and expenses.</li> <li>• <b>Duration:</b> Additional work will be invoiced separately</li> </ul>	Maintenance RFU/RFH	1611424

## SICK AT A GLANCE

SICK is one of the leading manufacturers of intelligent sensors and sensor solutions for industrial applications. A unique range of products and services creates the perfect basis for controlling processes securely and efficiently, protecting individuals from accidents and preventing damage to the environment.

We have extensive experience in a wide range of industries and understand their processes and requirements. With intelligent sensors, we can deliver exactly what our customers need. In application centers in Europe, Asia and North America, system solutions are tested and optimized in accordance with customer specifications. All this makes us a reliable supplier and development partner.

Comprehensive services complete our offering: SICK LifeTime Services provide support throughout the machine life cycle and ensure safety and productivity.

For us, that is “Sensor Intelligence.”

## WORLDWIDE PRESENCE:

Contacts and other locations –[www.sick.com](http://www.sick.com)