



CIRCUIT-BREAKER SZ S00,  
FOR MOTOR PROTECTION, CLASS 10,  
A-REL. 0.14...0.2A, N-RELEASE 2.6A,  
SPRING-L. CONNECTION STANDARD SW. CAPACITY W.  
TRANSVERSE AUX. SWITCH 1NO+1NC

**General technical data:**

<b>product brand name</b>		SIRIUS
<b>product designation</b>		3RV2 circuit breaker
<b>Size of the circuit-breaker</b>		S00
<b>Number of poles / for main current circuit</b>		3
<b>Product function</b>		
• removable terminal for auxiliary and control circuit		No
• overload protection		Yes
• phase disturbance recognition		Yes
• short-circuit to earth recognition		No
<b>Product component</b>		
• auxiliary switch		Yes
• undervoltage release mechanism		No
• trip indicator		No
<b>Product extension</b>		
• auxiliary switch		Yes
• optional / motor drive		No
<b>Impulse voltage resistance / rated value</b>	kV	6
<b>Protection class IP / on the front</b>		IP20
<b>Protection against electrical shock</b>		finger-safe

<b>Installation altitude / at a height over sea level / maximum</b>	m	2,000
<b>Resistance against shock</b>		25g / 11 ms
<b>Ambient temperature</b>		
• during transport	°C	-50 ... +80
• during storage	°C	-50 ... +80
• during operating	°C	-20 ... +60
<b>Active power loss / total / typical</b>	W	5.3

#### Main circuit:

<b>Operating voltage / rated value</b>	V	690
<b>Service power / at AC-3</b>		
• at 400 V / rated value	W	60
• at 500 V / rated value	W	60
• at 690 V / rated value	W	90
<b>Operational current / at AC-3 / at 400 V / rated value</b>	A	0.2
<b>Mechanical operating cycles as operating time / of the main contacts / typical</b>		100,000
<b>Frequency of operation / at AC-3 / according to IEC 60947-6-2</b>	1/h	15

#### Auxiliary circuit:

<b>Design of the auxiliary switch</b>		transverse
<b>Number of change-over switches / for auxiliary contacts</b>		0
<b>Mechanical operating cycles as operating time / of the auxiliary contacts / typical</b>		100,000
<b>Design of the fuse link / for short-circuit protection of the auxiliary switch / required</b>		Fuse gL/gG: 10 A, miniature circuit breaker C 6 A (short-circuit current $I_k < 400$ A)
<b>Operating current / of the auxiliary contacts / at AC-15 / at 24 V</b>	A	2
<b>Operating current / of the auxiliary contacts</b>		
• at AC-15		
• at 230 V	A	0.5
• at DC-13		
• at 24 V	A	1
• at 60 V	A	0.15

#### Protection function:

<b>Trip class</b>		CLASS 10
<b>Adjustable response current / of the current-dependent overload release</b>	A	0.14 ... 0.2
<b>Breaking capacity limit short-circuit current (<math>I_{cu}</math>)</b>		
• at 400 V / rated value	A	100,000
• at 500 V / rated value	A	100,000
• at 690 V / rated value	A	100,000

**Safety:****Proportion of dangerous failures**

• with high demand rate / according to SN 31920	%	40
• with low demand rate / according to SN 31920	%	40

**Failure rate (FIT value) / with low demand rate / according to SN 31920**

FIT 50

**B10 value / with high demand rate / according to SN 31920**

50,000

**T1 value / for proof test interval or service life / according to IEC 61508**

a 10

**Installation/mounting/dimensions:****Type of mounting**

screw and snap-on mounting onto 35 mm standard mounting rail according to DIN EN 60715

**mounting position**

any

**Depth**

mm 96

**Height**

mm 109

**Width**

mm 45

**Connections:****Arrangement of electrical connectors / for main current circuit**

Top and bottom

**Design of the electrical connection**

• for main current circuit	spring-loaded terminals
• for auxiliary and control current circuit	spring-loaded terminals

**Type of the connectable conductor cross-section**

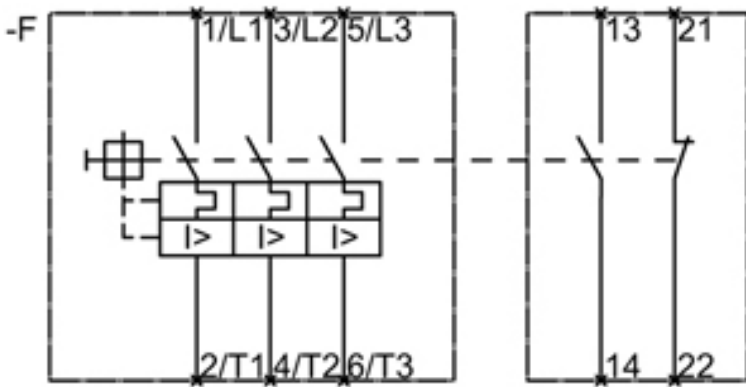
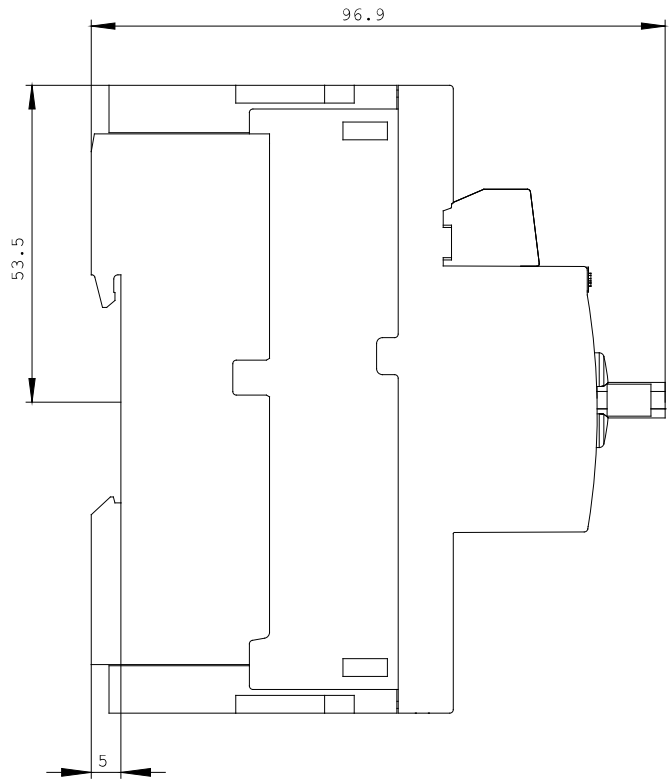
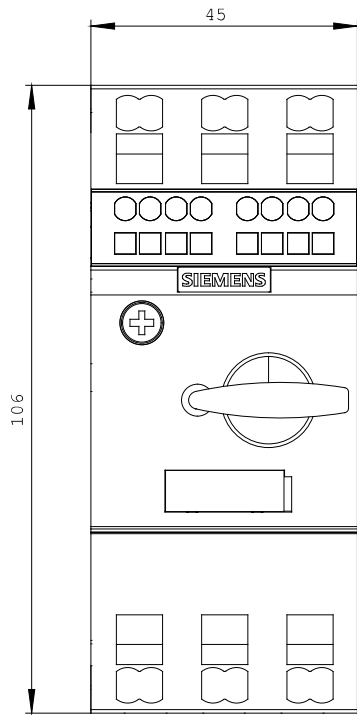
• for main contacts	
• solid	2x (0.5 ... 4 mm <sup>2</sup> )
• finely stranded	
• without conductor final cutting	2x (0.5 ... 2.5 mm <sup>2</sup> )
• with conductor end processing	2x (0.5 ... 2.5 mm <sup>2</sup> )
• for AWG conductors / for main contacts	2x (20 ... 12)
• for auxiliary contacts	
• solid	2x (0.5 ... 2.5 mm <sup>2</sup> )
• finely stranded	
• without conductor final cutting	2x (0.5 ... 1.5 mm <sup>2</sup> )
• with conductor end processing	2x (0.5 ... 1.5 mm <sup>2</sup> )
• for AWG conductors / for auxiliary contacts	2x (20 ... 14)

**UL/CSA ratings:****Contact rating designation / for auxiliary contacts / according to UL**

C300 / R300

**Certificates/approvals:**

**General Product Approval****For use in hazardous locations****Declaration of Conformity****Test Certificates**[other](#)[Special Test Certificate](#)[Type Test Certificates/Test Report](#)**Shipping Approval****Shipping Approval****other**[other](#)**Further information:****Information- and Downloadcenter (Catalogs, Brochures,...)**<http://www.siemens.com/industrial-controls/catalogs>**Industry Mall (Online ordering system)**<http://www.siemens.com/industrial-controls/mall>**Cax online generator:**<http://www.siemens.com/cax>**Service&Support (Manuals, Certificates, Characteristics, FAQs,...)**<http://support.automation.siemens.com/WW/view/en/3RV2011-0BA25/all>**Image database (product images, 2D dimension drawings, 3D models, device circuit diagrams, ...)**[http://www.automation.siemens.com/bilddb/cax\\_en.aspx?mlfb=3RV2011-0BA25](http://www.automation.siemens.com/bilddb/cax_en.aspx?mlfb=3RV2011-0BA25)



last change:

Feb 14, 2013