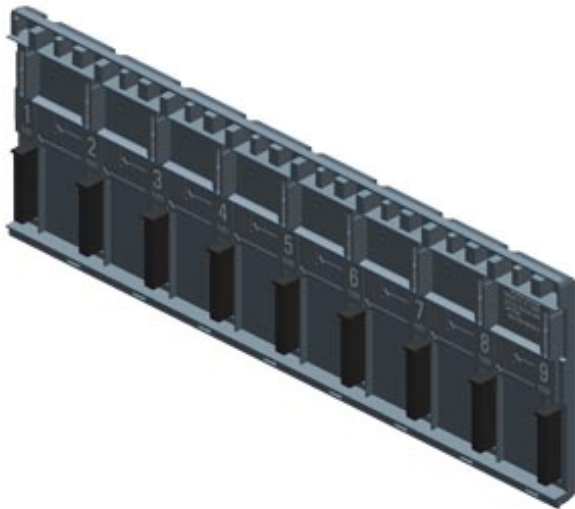


SIMATIC S7-1500 / ET 200MP active backplane bus 8 slots for inserting S7-1500 I/O modules for hot swapping for use in the ET 200MP with IM 155-5 PN HF (from FW V4.4.1); S7-1500 mounting rail and slot covers to be ordered separately



| General information  |                              |
|--|------------------------------|
| Product type designation   | Active Backplane ST 1+8 Slot |
| HW functional status   | From FS01                    |
| Firmware version   | V1.0.0                       |
| <ul style="list-style-type: none"> <li>FW update possible</li> </ul>                                     | Yes                          |
| Product function   |                              |
| <ul style="list-style-type: none"> <li>I&amp;M data</li> </ul>   | Yes; I&M0 to I&M3            |
| <ul style="list-style-type: none"> <li>Isochronous mode</li> </ul>                                       | Yes                          |
| <ul style="list-style-type: none"> <li>Prioritized startup</li> </ul>                                    | Yes                          |
| Engineering with   |                              |
| <ul style="list-style-type: none"> <li>STEP 7 TIA Portal configurable/integrated from version</li> </ul> | V16                          |
| <ul style="list-style-type: none"> <li>STEP 7 configurable/integrated from version</li> </ul>            | V5.6 and higher              |
| <ul style="list-style-type: none"> <li>PROFINET from GSD version/GSD revision</li> </ul>                 | V2.35 / -                    |
| Power  |                              |
| Power available from the backplane bus   | 2 W                          |
| Power loss   |                              |
| Power loss, typ.   | 2 W                          |

## Hardware configuration

### Slots

|                                      |   |
|--------------------------------------|---|
| • Grid size                          | 35 mm; Utilization of 25 mm-wide modules possible |
| • Number of slots                    | 9   |
| — of which for CPU, max.             | 0   |
| — of which for IM, max.              | 1   |
| — of which for PS, max.              | 2; Max. 2 PS per station                          |
| — of which for IO/CM/CP/TM, max.     | 8   |
| — of which for F-IO, max.            | 8   |
| • Number of single-width slots, max. | 8   |

## Ambient conditions

### Ambient temperature during operation

|                                 |        |
|---------------------------------|--------|
| • horizontal installation, min. | -30 °C |
| • horizontal installation, max. | 60 °C  |
| • vertical installation, min.   | -30 °C |
| • vertical installation, max.   | 40 °C  |

### Ambient temperature during storage/transportation

|        |        |
|--------|--------|
| • min. | -40 °C |
| • max. | 70 °C  |

### Altitude during operation relating to sea level

|   |  |
|---|--|
| • Installation altitude above sea level, max. | 5 000 m; Restrictions for installation altitudes > 2 000 m, see manual |
|---|--|

## Dimensions

|        |        |
|--------|--------|
| Width  | 294 mm |
| Height | 99 mm  |
| Depth  | 14 mm  |

## Weights

|                 |       |
|-----------------|-------|
| Weight, approx. | 245 g |
|-----------------|-------|

**last modified:** 11/04/2020