



OVERLOAD RELAY 1...4 A FOR MOTOR PROTECTION  
 SIZE S00,  
 CLASS 10 CONTACTOR ASS. MAIN CIRCUIT: SPR.-  
 LOAD.TERM. AUX.CIRCUIT: SPR.-LOAD.TERM. MANUAL-  
 AUTOM.-RESET

General technical data:		
product brand name		SIRIUS
Product designation		solid-state overload relay
Size of overload relay		S00
Number of poles / for main current circuit		3
Product function / removable terminal for auxiliary and control circuit		Yes
Product function		
• overload protection		Yes
• phase disturbance recognition		Yes
• short-circuit to earth recognition		No
Product component		
• auxiliary switch		Yes
• trip indicator		Yes
Insulation voltage / with degree of pollution 3 / rated value	V	690
Impulse voltage resistance / rated value	kV	6
Protection class IP		
• of the terminal		IP20
• on the front		IP20
Protection against electrical shock		finger-safe

<b>Installation altitude / at a height over sea level / maximum</b>	m	2,000
<b>Resistance against vibration</b>		1-6 Hz, 15 mm; 6-500 Hz, 20 m/s <sup>2</sup> ; 10 cycles
<b>Ambient temperature</b>		
• during transport	°C	-40 ... +80
• during storage	°C	-40 ... +80
• during operating	°C	-25 ... +60
<b>Relative humidity</b>		
• during operating phase	/ %	95
<b>EMC immunity to interference / according to IEC 60947-1</b>		corresponds to degree of severity 3
<b>EMC emitted interference / according to IEC 60947-1</b>		CISPR 11, environment B (residential area)
<b>Electrostatic discharge / according to IEC 61000-4-2</b>		6 kV contact discharge / 8 kV air discharge
<b>Field-bound parasitic coupling / according to IEC 61000-4-3</b>		10 V/m
<b>Conductor-bound parasitic coupling BURST / according to IEC 61000-4-4</b>		2 kV (power ports), 1 kV (signal ports) corresponds to degree of severity 3
<b>Conductor-bound parasitic coupling conductor-earth SURGE</b>		2 kV (line to earth) corresponds to degree of severity 3
<b>Conductor-bound parasitic coupling conductor-conductor SURGE</b>		1 kV (line to line) corresponds to degree of severity 3
<b>Type of protection</b>		PTB 09 ATEX 3001 Ex II (2) G [Ex e] [Ex d] [Ex px] D [Ex t] [Ex p]
<b>Active power loss / total / typical</b>	W	0.1
<b>Size of the contactor / can be combined / company-specific</b>		S00

#### Main circuit:

<b>Operating current</b>		
• at AC-3 / at 400 V / rated value	A	4
• of the auxiliary contacts		
• at AC-15		
• at 24 V	A	4
• at 110 V	A	4
• at 120 V	A	4
• at 125 V	A	4
• at 230 V	A	3
• at DC-13		
• at 24 V	A	2
• at 60 V	A	0.55
• at 110 V	A	0.3
• at 125 V	A	0.3
• at 220 V	A	0.11
<b>Type of assignment</b>		2

#### Control circuit/ Control:

Type of voltage supply / via input/ output link master		No
Voltage type / for auxiliary and control circuit		AC/DC

#### Auxiliary circuit:

Number of NC contacts / for auxiliary contacts		1
Number of NO contacts / for auxiliary contacts		1
Number of changeover contacts / for auxiliary contacts		0
Design of the fuse link / for short-circuit protection of the auxiliary switch / required		fuse gL/gG: 6 A

#### Protective and monitoring functions:

Trip class		CLASS 10
Adjustable response current		
<ul style="list-style-type: none"> <li>of the current-dependent overload release</li> </ul>	A	1 ... 4

#### Installation/ mounting/ dimensions:

Mounting type		direct mounting
mounting position		any
Depth	mm	90
Height	mm	72
Width	mm	45
Arrangement of electrical connectors / for main current circuit		Top and bottom

#### Connections/ terminals:

Design of the electrical connection		
<ul style="list-style-type: none"> <li>for main current circuit</li> </ul>		spring-loaded terminals
<ul style="list-style-type: none"> <li>for auxiliary and control current circuit</li> </ul>		spring-loaded terminals
Type of the connectable conductor cross-section		
<ul style="list-style-type: none"> <li>for main contacts <ul style="list-style-type: none"> <li>solid or multi-stranded</li> </ul> </li> </ul>		1x (0,5 ... 4 mm <sup>2</sup> )
<ul style="list-style-type: none"> <li>finely stranded <ul style="list-style-type: none"> <li>without conductor final cutting</li> </ul> </li> </ul>		1x (0.5 ... 2.5 mm <sup>2</sup> )
<ul style="list-style-type: none"> <li>with conductor end processing</li> </ul>		1x (0.5 ... 2.5 mm <sup>2</sup> )
<ul style="list-style-type: none"> <li>for AWG conductors / for main contacts</li> </ul>		1x (20 ... 12)
<ul style="list-style-type: none"> <li>for auxiliary contacts <ul style="list-style-type: none"> <li>solid or multi-stranded</li> </ul> </li> </ul>		1x (0,5 ... 1,5 mm <sup>2</sup> ), 2x (0,5 ... 1,5 mm <sup>2</sup> )
<ul style="list-style-type: none"> <li>finely stranded <ul style="list-style-type: none"> <li>without conductor final cutting</li> </ul> </li> </ul>		1x (0.25 ... 1.5 mm <sup>2</sup> ), 2x (0.25 ... 1.5 mm <sup>2</sup> )
<ul style="list-style-type: none"> <li>with conductor end processing</li> </ul>		1x (0.25 ... 1.5 mm <sup>2</sup> ), 2x (0.25 ... 1.5 mm <sup>2</sup> )
<ul style="list-style-type: none"> <li>for AWG conductors / for auxiliary contacts</li> </ul>		1x (24 ... 16), 2x (24 ... 16)

#### UL/CSA ratings:

Contact rating designation / for auxiliary contacts / according to UL

B600 / R300

### Certificates/ approvals:

General Product Approval

EMC

For use in hazardous locations



CCC



CSA



UL



C-TICK



ATEX

### Test Certificates

[Special Test Certificate](#)

[Type Test Certificates/Test Report](#)

### Shipping Approval



ABS



BUREAU VERITAS



GL



LRS



RINA

### other

[Declaration of Conformity](#)

[Environmental Confirmations](#)

### Further information:

Information- and Downloadcenter (Catalogs, Brochures,...)

<http://www.siemens.com/industrial-controls/catalogs>

Industry Mall (Online ordering system)

<http://www.siemens.com/industrymall>

Cax online generator

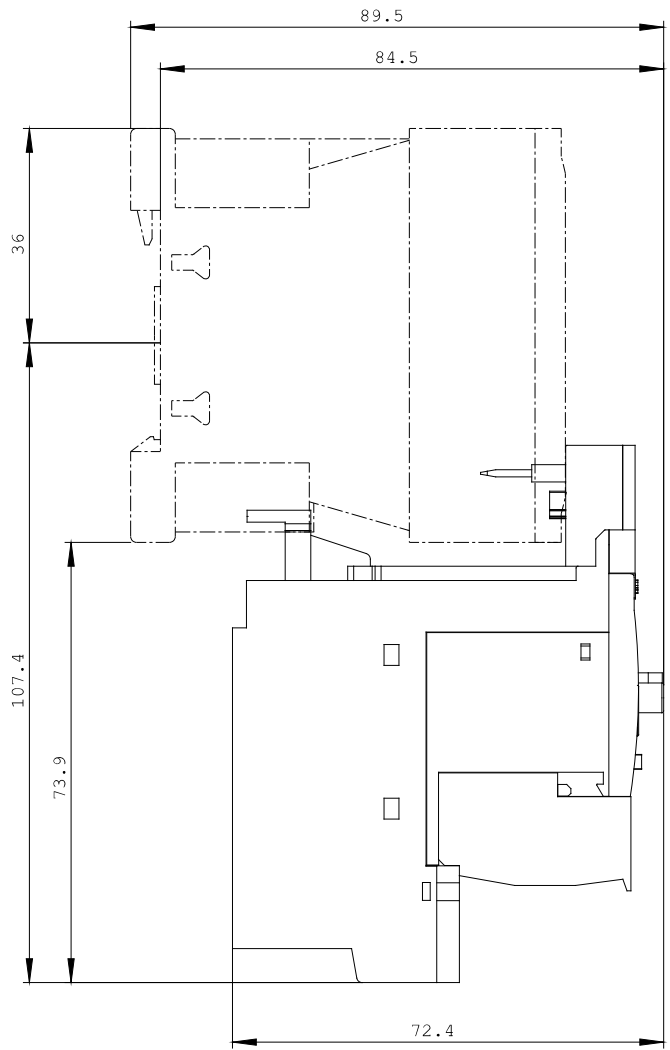
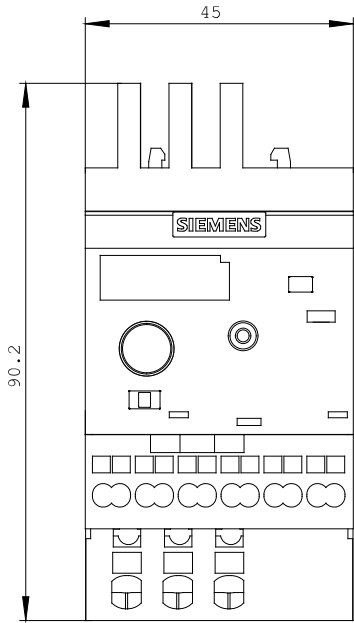
<http://www.siemens.com/cax>

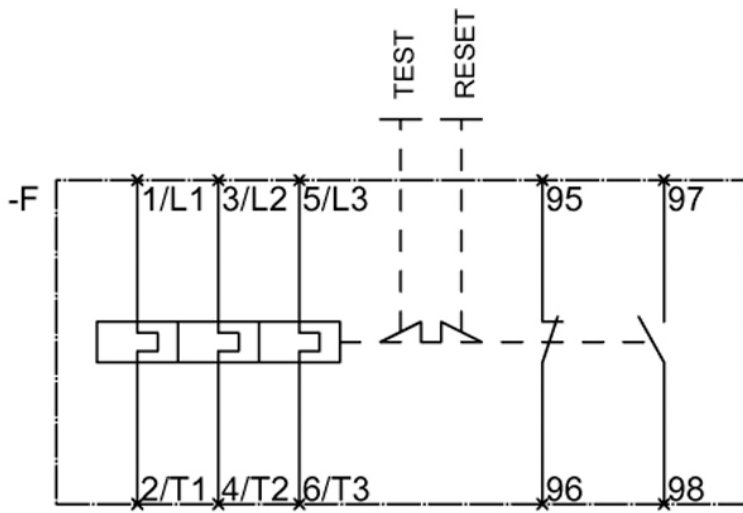
Service&Support (Manuals, Certificates, Characteristics, FAQs,...)

<http://support.automation.siemens.com/WW/view/en/3RB3016-1PE0/all>

Image database (product images, 2D dimension drawings, 3D models, device circuit diagrams, ...)

[http://www.automation.siemens.com/bilddb/cax\\_en.aspx?mlfb=3RB3016-1PE0](http://www.automation.siemens.com/bilddb/cax_en.aspx?mlfb=3RB3016-1PE0)





last change:

Aug 4, 2014