



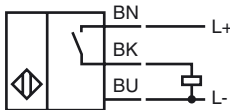
**Model Number**

NJ6-F-E2-10M

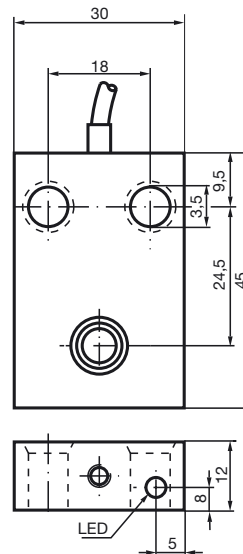
**Features**

- Comfort series
- 6 mm flush
- 3-wire DC

**Connection**



**Dimensions**



**Technical Data**

**General specifications**

Switching element function	PNP	NO
Rated operating distance	$s_n$	6 mm
Installation		flush
Output polarity		DC
Assured operating distance	$s_a$	0 ... 4.8 mm
Reduction factor $r_{Al}$		0.22
Reduction factor $r_{Cu}$		0.2
Reduction factor $r_{304}$		0.7

**Nominal ratings**

Operating voltage	$U_B$	10 ... 60 V DC
Switching frequency	$f$	0 ... 500 Hz
Hysteresis	$H$	0 ... 0.3 typ. 0.1 %
Reverse polarity protected		reverse polarity protected
Short-circuit protection		pulsing
Voltage drop	$U_d$	$\leq 3$ V
Operating current	$I_L$	0 ... 200 mA
Off-state current	$I_r$	$\leq 0.5$ mA
No-load supply current	$I_0$	$\leq 20$ mA
Indication of the switching state		LED, yellow

**Functional safety related parameters**

MTTF <sub>d</sub>	1060 a
Mission Time (T <sub>M</sub> )	20 a
Diagnostic Coverage (DC)	0 %

**Ambient conditions**

Ambient temperature	-25 ... 70 °C (-13 ... 158 °F)
---------------------	--------------------------------

**Mechanical specifications**

Connection type	cable PUR , 10 m
Core cross-section	0.34 mm <sup>2</sup>
Housing material	PBT
Sensing face	PBT
Protection degree	IP67

**Compliance with standards and directives**

Standard conformity	
Standards	EN 60947-5-2:2007 IEC 60947-5-2:2007

**Approvals and certificates**

UL approval	cULus Listed, General Purpose
CSA approval	cCSAus Listed, General Purpose
CCC approval	Certified by China Compulsory Certification (CCC)

Release date: 2012-05-30 14:42 Date of issue: 2012-05-30 089661\_eng.xml