



Model Number

NBB8-F33-E2

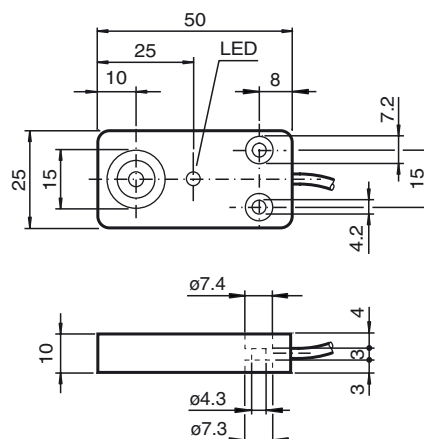
Features

- 8 mm flush
- 3-wire DC

Technical Data

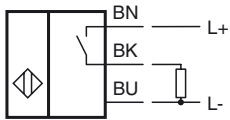
| | |
|---|---|
| General specifications | |
| Switching function | Normally open (NO) |
| Output type | PNP |
| Rated operating distance | s_n 8 mm |
| Installation | flush |
| Output polarity | DC |
| Assured operating distance | s_a 0 ... 6.48 mm |
| Reduction factor r_{AI} | 0.3 |
| Reduction factor r_{CU} | 0.2 |
| Reduction factor r_{304} | 0.6 |
| Output type | 3-wire |
| Nominal ratings | |
| Installation conditions | |
| B | 0 mm |
| C | 1.5 mm |
| F | 38 mm |
| Operating voltage | U_B 10 ... 60 V DC |
| Switching frequency | f 0 ... 350 Hz |
| Hysteresis | H typ. 5 % |
| Reverse polarity protection | reverse polarity protected |
| Short-circuit protection | pulsing |
| Voltage drop | U_d \leq 3 V |
| Operating current | I_L 0 ... 200 mA |
| Off-state current | I_r 0 ... 0.1 mA |
| No-load supply current | I_0 \leq 10 mA |
| Time delay before availability | t_v \leq 50 ms |
| Switching state indicator | LED yellow |
| Functional safety related parameters | |
| MTTF _d | 1140 a |
| Mission Time (T _M) | 20 a |
| Diagnostic Coverage (DC) | 0 % |
| Ambient conditions | |
| Ambient temperature | -35 ... 70 °C (-31 ... 158 °F) |
| Storage temperature | -40 ... 85 °C (-40 ... 185 °F) |
| Mechanical specifications | |
| Connection type | cabl PVC , 2 m |
| Core cross-section | 0.34 mm ² |
| Housing material | PBT |
| Sensing face | PBT |
| Degree of protection | IP67 |
| Cable | |
| Cable diameter | 4.8 mm \pm 0.2 mm |
| Bending radius | > 10 x cable diameter |
| Note | Tightening torque: 5 Nm |
| Compliance with standards and directives | |
| Standard conformity | |
| Standards | EN 60947-5-2:2007 EN 60947-5-2/A1:2012 IEC 60947-5-2:2007 IEC 60947-5-2 AMD 1:2012 |
| Approvals and certificates | |
| UL approval | cULus Listed, General Purpose |
| CSA approval | cCSAus Listed, General Purpose |
| CCC approval | Certified by China Compulsory Certification (CCC) |

Dimensions



Release date: 2019-08-05 13:25 Date of issue: 2019-08-05 200042_eng.xml

Electrical Connection



Installation Conditions

