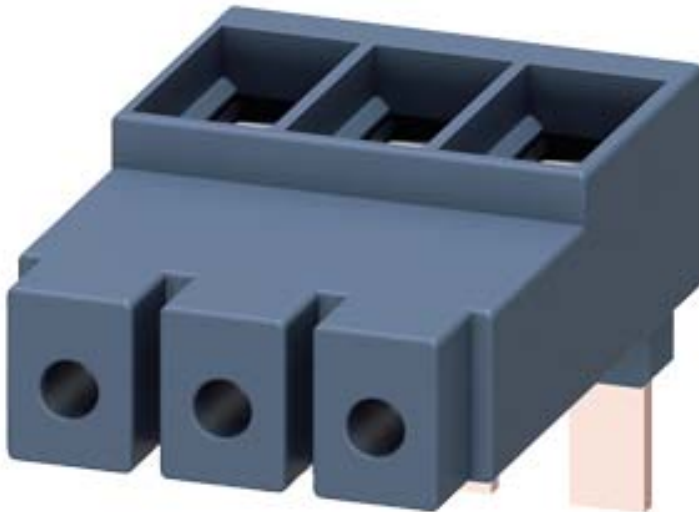


3-phase supply terminal Size S2 for 3-phase busbar connection from top



General technical data:

Product brand name		SIRIUS
Product designation		Three-phase feeder terminal
Design of the product		from above, size S2
Size of the circuit-breaker		S2
Protection class IP on the front		IP20
Insulation voltage with degree of pollution 3 rated value	V	690
Ambient temperature		
• during storage	°C	-50 ... +80
• during operation	°C	-20 ... +60
Ampacity maximum	A	105

Installation/ mounting/ dimensions:

Width	mm	54.5
Height	mm	50.8
Depth	mm	76.5

Connections/ Terminals:

Type of electrical connection for main current circuit		screw-type terminals
--	--	----------------------

Type of connectable conductor cross-sections

- for main contacts
 - solid 2x (2.5 ... 50 mm²), 1x (2.5 ... 70 mm²)
 - stranded 2x (2.5 ... 50 mm²), 1x (2.5 ... 70 mm²)
 - finely stranded
 - with core end processing 2x (2.5 ... 35 mm²), 1x (2.5 ... 50 mm²).
- at AWG conductors for main contacts 2x (10 ... 1/0), 1x (10 ... 2/0)

Certificates/ approvals:

Certificate of suitability

CE / UL / CSA / CCC

General Product Approval

**Declaration of
Conformity**

Test Certificates



[Special Test Certificate](#)

[Type Test Certificates/Test Report](#)

Shipping Approval



other

Railway

[Confirmation](#)

[Vibration and Shock](#)



Further information

Information- and Downloadcenter (Catalogs, Brochures,...)

<http://www.siemens.com/industrial-controls/catalogs>

Industry Mall (Online ordering system)

<http://www.siemens.com/industrymall>

Cax online generator

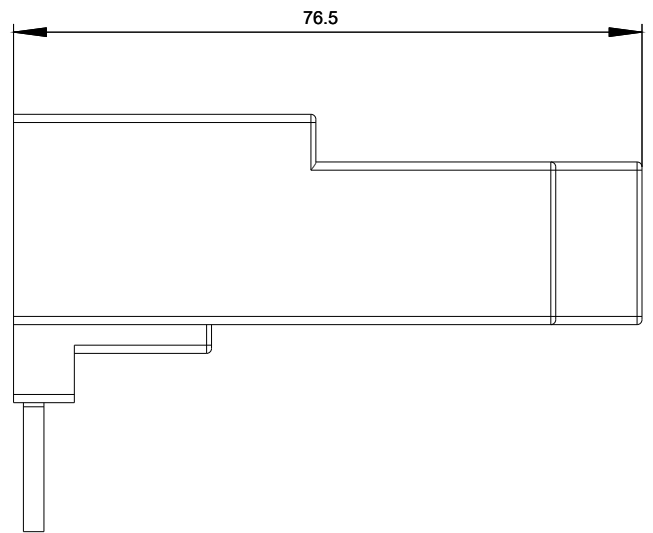
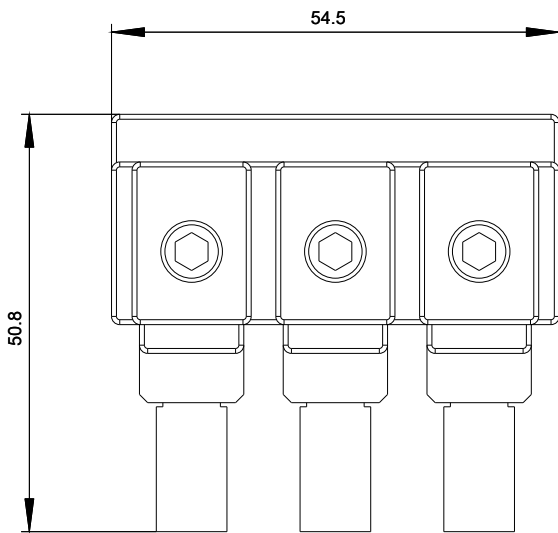
<http://support.automation.siemens.com/WW/CAXorder/default.aspx?lang=en&mlfb=3RV2935-5A>

Service&Support (Manuals, Certificates, Characteristics, FAQs,...)

<https://support.industry.siemens.com/cs/ww/en/ps/3RV2935-5A>

Image database (product images, 2D dimension drawings, 3D models, device circuit diagrams, EPLAN macros, ...)

http://www.automation.siemens.com/bilddb/cax_de.aspx?mlfb=3RV2935-5A&lang=en



last modified:

01/20/2019