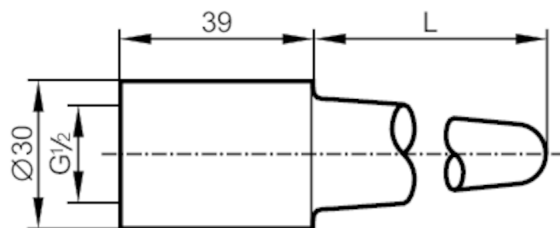


E35210



Welding thermowell for temperature sensors

WELDING THERMOWELL G1/2



Application	
Pressure rating	[bar] 100
Measuring/setting range	
Probe length L	[mm] 73
Mechanical data	
Weight	[g] 306.8
Dimensions	[mm] Ø 10
Materials	stainless steel (1.4571/316Ti)
Sensor connection	G 1/2
Process connection	welding adapter Ø 30 mm
Surface characteristics Ra/Rz of the wetted parts	< 0.6 / -
Remarks	
Pack quantity	1 pcs.