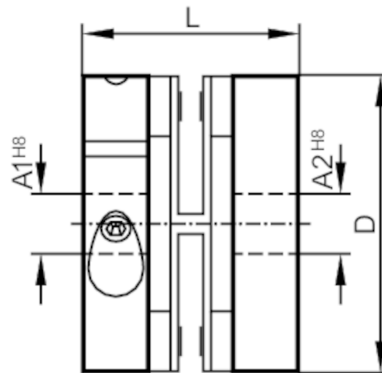


E60117



Spring disc coupling electrically isolating

SPRING COUPLING 30-6-10-22



Mechanical data	
Weight [g]	31.2
Materials	diecast zinc; PA
External diameter D [mm]	30
inside diameter A1 [mm]	6
inside diameter A2 [mm]	10
Length L [mm]	22
Max. revolution, mechanical [U/min]	12000
Max. axial shaft misalignment [mm]	± 0,4
Max. radial shaft misalignment [mm]	± 0,3
Max. angular displacement [°]	± 2,5
Remarks	
Remarks	The data indicated apply to couplings with the above hub borings at an ambient temperature of 23 °C. The values of radial, angular and axial displacement are maximum values which must not reach their maximum simultaneously while in operation.
Pack quantity	1 pcs.