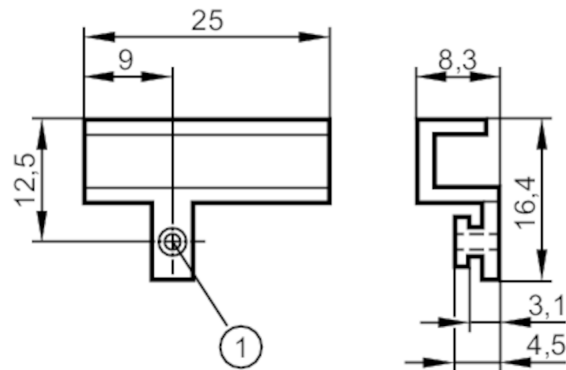


E11891



Mounting adapter for SNC pneumatic cylinders

ADAPT FOR CYL SMC CDQ2



1 Mounting screw SW 1.5

Application

Design T-slot rail, high MKT

Mechanical data

Weight [g] 3.7

Dimensions [mm] 16.4 x 25 x 8.3

Materials aluminium; screw: stainless steel

Remarks

Pack quantity 1 pcs.