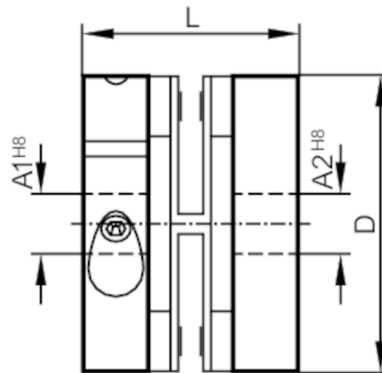


E60118



Spring disc coupling electrically isolating

SPRING COUPLING 30-10-10-22



Mechanical data

Weight	[g]	29.6
Materials		diecast zinc; PA
External diameter D	[mm]	30
inside diameter A1	[mm]	10
inside diameter A2	[mm]	10
Length L	[mm]	22
Max. revolution, mechanical	[U/min]	12000
Max. axial shaft misalignment	[mm]	± 0,4
Max. radial shaft misalignment	[mm]	± 0,3
Max. angular displacement	[°]	± 2,5

Remarks

Remarks	The data indicated apply to couplings with the above hub borings at an ambient temperature of 23 °C. The values of radial, angular and axial displacement are maximum values which must not reach their maximum simultaneously while in operation.
Pack quantity	1 pcs.