

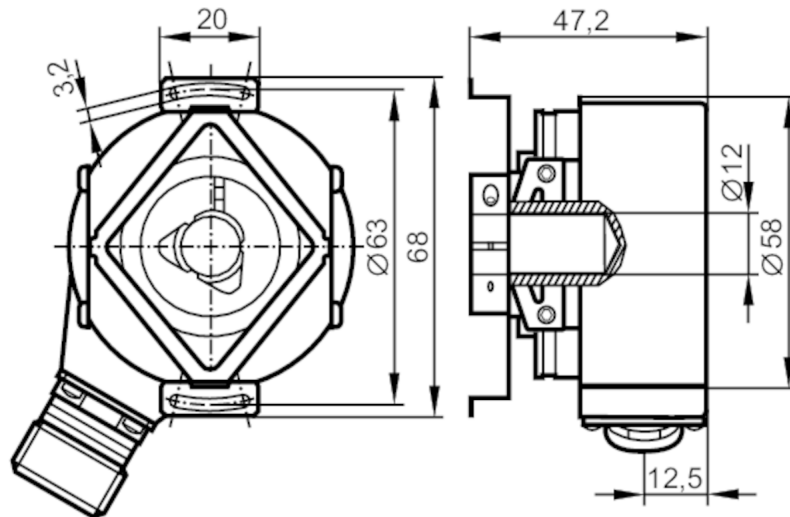
RO1373

Incremental encoder with hollow shaft

RO-1024-I05/T U



Status Archive



Application

Function principle incremental

Electrical data

Operating voltage tolerance [%]	10
Operating voltage [V]	5 DC
Current consumption [mA]	< 150

Outputs

Electrical design	TTL
Max. current load per output [mA]	20
Switching frequency [kHz]	300
Phase difference A und B [°]	90

Measuring/setting range

Resolution 1024 resolution

Operating conditions

Ambient temperature [°C]	-30...100
Note on ambient temperature	for firmly laid cable: -30 °C
Max. relative air humidity [%]	98
Protection	IP 64

Tests / approvals

Shock resistance	100 g (6 ms)
Vibration resistance	10 g (55...2000 Hz)
MTTF [years]	190

RO1373



Incremental encoder with hollow shaft

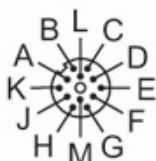
RO-1024-I05/T U

Mechanical data	
Weight [g]	349.2
Dimensions [mm]	Ø 58 / L = 47.2
Materials	aluminium
Max. revolution, mechanical [U/min]	12000
Max. starting torque [Nm]	1
Reference temperature torque [°C]	20
Shaft design	hollow shaft open to one side
Shaft diameter [mm]	12
Shaft fit	H7
Shaft material	stainless steel
Installation depth of shaft [mm]	10
Max. axial shaft misalignment [mm]	1; (max. radial shaft alignment: ± 0,05 mm)
Remarks	
Notes	discontinued article

Electrical connection

A	B inverted
B	Ub sensor
C	0 index
D	0 index inverted
E	A
F	A inverted
G	failure inverted
H	B
K	0V Un
L	0V sensor
M	L+ Up
screen	housing

Connector: 1 x M18 (ifm 1001.20), radial



RO1373

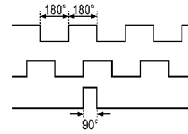


Incremental encoder with hollow shaft

RO-1024-I05/T U

Diagrams and graphs

Pulse diagram



Output A

Output B

0 index

[Status Archive](#)