

Switch disconnecter 3LD3, main switch 3-polig, Iu 40A operational switch at AC-23 A at 400 V 15,0 kW floor mounting Base mounting with door coupling center-hole 22,5 mm knob-operated mechanism black 48 x 48 mm



Model	
Product brand name	SENTRON
Product designation	3LD Switch disconnecter
Design of the product	Main switch
Display version / for switch position indicator manual operation	1 ON - 0 OFF
Design of the operating mechanism	selector switch
Design of handle	knob-operated mechanism, black
General technical data	
Number of poles	3
Type of device	fixed mounting
Type of switch	Floor mounting with door coupling
Operating frequency / maximum	50 1/h
Voltage	
Insulation voltage / rated value	690 V
Surge voltage resistance / rated value	6 kV
Protection class	
Protection class IP	IP65

Protection class IP / on the front	IP65
Dissipation	
Power loss [W]	2.5 W
<ul style="list-style-type: none"> • for rated value of the current / at AC / in hot operating state / per pole 	
Electricity	
Current / at AC / rated value	40 A
Continuous current / rated value	40 A
Short-time current resistance (I _{cw}) / at 690 V / limited to 1 s / rated value	1 000 A
Main circuit	
Operating frequency	
<ul style="list-style-type: none"> • initial value 	50 Hz
<ul style="list-style-type: none"> • Full-scale value 	60 Hz
Operating power	
<ul style="list-style-type: none"> • at AC-23 A / at 400 V / rated value 	18.5 kW
<ul style="list-style-type: none"> • at AC-23 A / at 690 V / rated value 	15 kW
<ul style="list-style-type: none"> • at AC-3 / at 400 V / rated value 	11.5 kW
<ul style="list-style-type: none"> • at AC-3 / at 690 V / rated value 	11.5 kW
Operating voltage	
<ul style="list-style-type: none"> • at AC / at 50/60 Hz / rated value 	690 V
Auxiliary circuit	
Operating voltage / of auxiliary contacts / at AC / maximum	500 V
Continuous current / of the auxiliary contact / rated value	10 A
Insulation voltage / of the auxiliary switch / rated value	500 V
Suitability	
Suitability for use	
<ul style="list-style-type: none"> • Main switch 	Yes
<ul style="list-style-type: none"> • switch disconnecter 	Yes
<ul style="list-style-type: none"> • EMERGENCY OFF switch 	Yes
<ul style="list-style-type: none"> • safety switch 	Yes
<ul style="list-style-type: none"> • maintenance/repair switch 	Yes
Product details	
Product feature / interlock	Yes
Product extension / optional	
<ul style="list-style-type: none"> • motor drive 	No
<ul style="list-style-type: none"> • Voltage trigger 	No

Short-time current resistance (I _{cw}) / limited to 1 s / rated value	1 000 kA
Number of NC contacts	0
Number of NO contacts	0

Connections

Type of electrical connection	Box terminal
<ul style="list-style-type: none"> for main current circuit 	

Requirements

Design of the fuse link	
<ul style="list-style-type: none"> for short-circuit protection of the main circuit / required 	fuse gL/gG: 40 A
<ul style="list-style-type: none"> for short-circuit protection of the auxiliary switch / required 	fuse gL/gG: 10 A

Mechanical Design

Height	60 mm
Width	36 mm
Depth	380 mm
Mounting type	Built-in unit fixed-mounted version
Mounting type	
<ul style="list-style-type: none"> front mounting with 4-hole attachment 	No
<ul style="list-style-type: none"> front mounting with central attachment 	Yes
<ul style="list-style-type: none"> rail mounting 	Yes
Net weight	300 g

Environmental conditions

Ambient temperature	
<ul style="list-style-type: none"> during operation / minimum 	-25 °C
<ul style="list-style-type: none"> during operation / maximum 	55 °C

Certificates

Equipment marking	
<ul style="list-style-type: none"> acc. to DIN EN 61346-2 	S
<ul style="list-style-type: none"> acc. to DIN EN 81346-2 	SF

Declaration of Conformity



Further information

Information- and Downloadcenter (Catalogs, Brochures,...)
<http://www.siemens.com/lowvoltage/catalogs>

Industry Mall (Online ordering system)

<https://mall.industry.siemens.com/mall/en/en/Catalog/product?mlfb=3LD3340-0TK11>

Service&Support (Manuals, Certificates, Characteristics, FAQs,...)

<https://support.industry.siemens.com/cs/ww/en/ps/3LD3340-0TK11>

Image database (product images, 2D dimension drawings, 3D models, device circuit diagrams, ...)

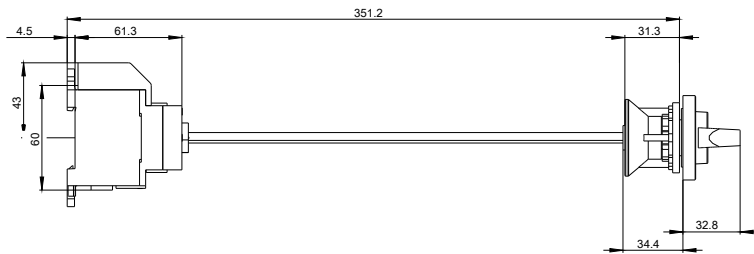
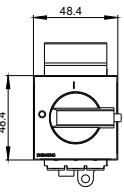
http://www.automation.siemens.com/bilddb/cax_en.aspx?mlfb=3LD3340-0TK11

CAX-Online-Generator

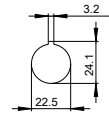
<http://www.siemens.com/cax>

Tender specifications

<http://www.siemens.com/specifications>



Tuer/ Door/ Porte
Puerta/ Porta/ Porta



Boden/ Base/ Plancher/
Base/ Pavimento/ Fundo

