

## Data sheet for SIMOTICS M-1PH8

Article No. : **1PH8163-1HF00-2BC2-Z  
K09**

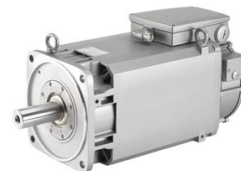


Figure similar

Client order no. :  
Order no. :  
Offer no. :  
Remarks :

Item no. :  
Consignment no. :  
Project :

### Engineering data

		P <sub>N</sub> [kW]	M <sub>N</sub> [Nm]	I <sub>N</sub> [A]	U <sub>N</sub> [V]	f <sub>N</sub> [Hz]	n <sub>N</sub> [rpm]	M <sub>max</sub> [Nm]	I <sub>max</sub> [A]	n <sub>max</sub> [rpm]	M <sub>0</sub> [Nm]	I <sub>0</sub> [A]	η	cos φ	I <sub>μ</sub> [A]
Y	ALM 400V	34.0	186.0	70.0	366	59.2	1,750	600	217.0	6,500	252.0	87	0.926	0.870	24.6
	BLM/SLM 400V	30.0	191.0	71.0	319	50.8	1,500	600	217.0	6,500	252.0	87	0.923	0.870	25.6
	ALM 480V	40.7	177.0	68.0	456	74.2	2,200	600	217.0	6,500	252.0	87	0.940	0.880	24.6
	BLM/SLM 480V	37.0	177.0	68.0	416	67.4	2,000	600	217.0	6,500	252.0	87	0.932	0.860	24.6

### Mechanical data

Motor type	Squirrel cage asynchronous motor
Shaft height	160
Cooling	Forced ventilation DE -> NDE
Vibration severity grade	R/A
Shaft and flange accuracy	R
Degree of protection	IP55
Design acc. to Code I	IM B3 (IM V5, IM V6, IM B6, IM B7, IM B8)
Temperature monitoring	Pt1000 temperature sensor in the stator winding
Color	Standard (Anthracite RAL 7016)
Type of the bearing	Standard with fixed bearing
Shaft end	Feather key with half key balancing
Encoder system	Incremental encoder HTL 1024 S/R, max. encoder speed = 9000 rpm

### Physical constants

Thermal time constant	35 min
Moment of inertia	2,160 kgcm <sup>2</sup>
Weight (approx.)	196 kg

### Connection

Type of electrical connection	Terminal box
Position of the connection	NDE right
Power connection	NDE
Signal connection	top
Terminal box designation	gk873

### Cooling data and sound pressure level

Airflow, min.	0.16 m <sup>3</sup> /s
Sound pressure level LpA(1m) motor + external fan operation 50 HZ rated load, tolerance + 3dB	73 dB <sup>1)</sup>
Air discharge	axial
Pressure drop	200 Pa

### External fan

#### Max. power consumption

3 AC 400 V / 50 Hz (±10%)	0.16 A
3 AC 400 V / 60 Hz (±10%)	0.21 A
3 AC 480 V / 60 Hz (±10%)	0.21 A

### Special design

K09 Terminal box NDE right

<sup>1)</sup> at a rated frequency of 4 kHz and a speed range of up to 5000 rpm