

## Data sheet for SIMOTICS S-1FG1

Article No. : **1FG1507-9RD43-4AX1-Z  
D11+H1G+K06**

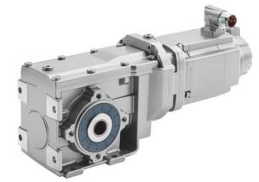


Figure similar

Client order no. :  
Order no. :  
Offer no. :  
Remarks :

Item no. :  
Consignment no. :  
Project :

### Gearbox data

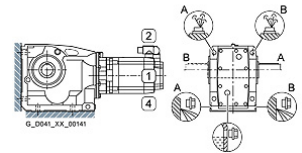
Gear box type	K69
Gearbox basic type	Bevel geared B / K
Gearbox size	69
Transmission stages	3
Transmission (ratio)	83.96
Gear number relation	8816/105
Output moment maximum (short-time)	635 Nm
max. input speed (briefly)	4,500 rpm
Output speed short-time	54 rpm
Emergency off output moment (1000 cycles)	1,020 Nm
Radial force maximum	10,100 N
Max. permissible radial force with Mmax	9,930 N
Moment of inertia	0.65 kgcm <sup>2</sup>
Torsional stiffness	59 Nm/°
Efficiency	0.92
Mounting position	M1-A
Mounting type	Foot-mounted
Output shaft version	Solid shaft without feather key
Output shaft dimension	VG35 x 70 mm
Gearbox flange diameter	-/-
Figure 2 torque support	-

### General tech. specifications

Color of the housing	Standard painting (Anthracite RAL 7016)
Specification	CE / UL / CSA / EAC / cRUus
Net weight	33.42 kg
1m-sound pressure level L <sub>pA</sub> (Tol.+3dB(A))	65
Plug position	top (default) (2)
Adapter flange position	top (default) (2)

### Lubrication and sealing

Gear oil	Mineral oil CLP ISO VG220
Output shaft sealing	Standard
Oil charge	0.75 l



### Motor data

Motor type	Permanent-magnet synchronous motor
Motor type	High Dynamic
DC-link voltage, max.	510...720V
Shaft height	48 mm
Cooling	Natural cooling
Rated speed	3,000 rpm
Rated torque (100K)	3.20 Nm
Rated power	1.01 kW
Rated current (100K)	3.15 A
Static torque	4.05 Nm
Static current	3.80 A
Moment of inertia	1.26 kgcm <sup>2</sup>
Efficiency η	91 %
Temperature monitoring	Pt1000 temperature sensor
Connector size	1
Degree of protection	IP65
Encoder system	Encoder AM20DQI: absolute encoder 20 bits (resolution 1048576, encoder-internal 512 S/R) + 12 bits multi-turn (traversing range 4096 revolutions)

### Limiting data

Maximum speed (short-time)	9,000 rpm
Maximum torque	11.30 Nm
Motor current short term	10.4 A

### Optimum operating point

Optimum speed	3,000 rpm
Optimum power	1.01 kW

## Data sheet for SIMOTICS S-1FG1

Article No. : **1FG1507-9RD43-4AX1-Z**  
**D11+H1G+K06**

### Recommended Motor Module

Rated inverter current	5.0 A
Maximum inverter current	15.0 A
Maximum torque	11.3 Nm

### Standards

Compliance with standards	CE / UL / CSA / EAC / cRUus
CE marking	EN 60034

### Options

D11	M1-A for bevel and worm gearboxes
H1G	Solid shaft without feather key
K06	Mineral oil CLP ISO VG220

### Info servo geared motor

Outside the standard temperature range of -10 to +40 °C, further selectable options must be observed, in addition to the lubricant selection.

Further, you have to check the suitability of the components and options used for the requested temperature range.