

Data sheet for SIMOTICS M-1PH8

Article No. : 1PH8137-1UF03-1LC1

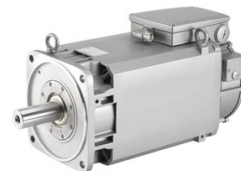


Figure similar

Client order no. :
Order no. :
Offer no. :
Remarks :

Item no. :
Consignment no. :
Project :

Engineering data

		P _N [kW]	M _N [Nm]	I _N [A]	U _N [V]	f _N [Hz]	n _N [rpm]	M _{max} [Nm]	I _{max} [A]	n _{max} [rpm]	M ₀ [Nm]	I ₀ [A]	η	cos φ	I _μ [A]
Y	ALM 400V	25.0	136.0	56.0	352	59.6	1,750	380	151.0	10,000	172.0	68	0.907	0.850	23.1
	BLM/SLM 400V	22.0	140.0	56.0	308	51.3	1,500	380	151.0	10,000	172.0	68	0.904	0.840	24.2
	ALM 480V	30.0	130.0	53.0	440	74.6	2,200	380	151.0	10,000	172.0	68	0.992	0.830	23.1
	BLM/SLM 480V	28.0	134.0	55.0	401	67.9	2,000	380	151.0	10,000	172.0	68	0.931	0.840	23.1

Mechanical data

Motor type	Squirrel cage asynchronous motor
Shaft height	132
Cooling	Forced ventilation DE -> NDE
Vibration severity grade	SPECIAL/B
Shaft and flange accuracy	SPECIAL
Degree of protection	IP55
Design acc. to Code I	IM B35 (IM V15, IM V35)
Temperature monitoring	Pt1000 temperature sensor in the stator winding
Color	Standard (Anthracite RAL 7016)
Type of the bearing	Performance
Shaft end	Feather key with full key balancing
Encoder system	Incremental encoder 20 bit without commutation position (encoder IN20DQ)

External fan

Max. power consumption

3 AC 400 V / 50 Hz (±10%)	0.10 A
3 AC 400 V / 60 Hz (±10%)	0.12 A
3 AC 480 V / 60 Hz (±10%)	0.12 A

¹⁾ at a rated frequency of 4 kHz and a speed range of up to 5000 rpm

Physical constants

Thermal time constant	30 min
Moment of inertia	1,090 kgcm ²
Weight (approx.)	141 kg

Connection

Type of electrical connection	Terminal box
Position of the connection	NDE top
Power connection	NDE
Signal connection	left
Terminal box designation	gk833

Cooling data and sound pressure level

Airflow, min.	0.09 m ³ /s
Sound pressure level LpA(1m) motor + external fan operation 50 HZ rated load, tolerance + 3dB	70 dB ¹⁾
Air discharge	axial
Pressure drop	140 Pa