

Data sheet for SIMOTICS M-1PH8

Article No. : 1PH8135-1FF10-2BA1

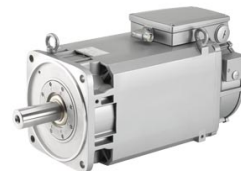


Figure similar

Client order no. :
Order no. :
Offer no. :
Remarks :

Item no. :
Consignment no. :
Project :

Engineering data

		P _N [kW]	M _N [Nm]	I _N [A]	U _N [V]	f _N [Hz]	n _N [rpm]	M _{max} [Nm]	I _{max} [A]	n _{max} [rpm]	M ₀ [Nm]	I ₀ [A]	η	cos φ	I _μ [A]
Y	ALM 400V	21.5	117.0	43.0	383	59.6	1,750	300	112.0	8,000	157.0	53	0.909	0.840	18.3
	BLM/SLM 400V	18.5	118.0	43.0	330	51.3	1,500	300	112.0	8,000	157.0	53	0.898	0.850	18.1
	ALM/BLM/SLM 480V	24.0	115.0	43.0	434	67.9	2,000	300	112.0	8,000	157.0	53	0.929	0.840	18.1

Mechanical data

Motor type	Squirrel cage asynchronous motor
Shaft height	132
Cooling	Forced ventilation NDE -> DE
Vibration severity grade	R/A
Shaft and flange accuracy	R
Degree of protection	IP55
Design acc. to Code I	IM B3 (IM V5, IM V6, IM B6, IM B7, IM B8)
Temperature monitoring	Pt1000 temperature sensor in the stator winding
Color	Standard (Anthracite RAL 7016)
Type of the bearing	Standard with fixed bearing
Shaft end	Feather key with half key balancing
Encoder system	Absolut encoder 22 bit Singleturn + 12 bit Multiturn, max. encoder speed = 12000 rpm

Physical constants

Thermal time constant	30 min
Moment of inertia	940 kgcm ²
Weight (approx.)	125 kg

Connection

Type of electrical connection	Terminal box
Position of the connection	NDE top
Power connection	right
Signal connection	DE
Terminal box designation	gk833

Cooling data and sound pressure level

Airflow, min.	0.09 m ³ /s
Sound pressure level LpA(1m) motor + external fan operation 50 HZ rated load, tolerance + 3dB	70 dB ¹⁾
Air discharge	axial
Pressure drop	140 Pa

External fan

Max. power consumption

3 AC 400 V / 50 Hz (±10%)	0.11 A
3 AC 400 V / 60 Hz (±10%)	0.13 A
3 AC 480 V / 60 Hz (±10%)	0.13 A

¹⁾ at a rated frequency of 4 kHz and a speed range of up to 5000 rpm