

Data sheet for SIMOTICS S-1FK2

Article No. : 1FK2103-2AH00-1MB0

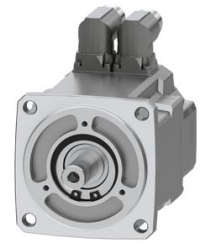


Figure similar

Client order no. :
Order no. :
Offer no. :
Remarks :

Item no. :
Consignment no. :
Project :

Basic motor data

Motor type	Permanent-magnet synchronous motor, Natural cooling, IP64
Motor type	High Dynamic
Static torque	0.64 Nm
Static current	1.1 A
Maximum torque	1.95 Nm
Maximum current	4.0 A
Maximum speed	8,000 rpm
Rotor moment of inertia	0.0930 kgcm ²
Weight	1.2 kg

Rated data

SINAMICS S120, BLM/SLM 3AC 400V

Rated speed	4,500 rpm
Rated torque	0.59 Nm
Rated current	1.1 A
Rated power	0.28 kW

Encoder system

Encoder system	Encoder AM22DQC: Absolute encoder 22 bit + 12 bit multiturn
----------------	---

Motor connection

Connection type	Double cable connection for S120
Connector size	M17

Mechanical data

Design acc. to Code I	IM B5 (IM V1, IM V3)
Vibration severity grade	Grade A
Shaft height	30
Flange size (AB)	60 mm
Centering ring (N)	50 mm
Hole circle (M)	70 mm
Screw-on hole (S)	5.4 mm
Overall length (LB)	99 mm
Diameter of shaft (D)	14 mm
Length of shaft (E)	30 mm
Length of flange diagonal (P)	81 mm
Shaft end	Fitted key
Color of the housing	Standard (Anthracite, similar to RAL 7016)

