

## Data sheet for SIMOTICS M-1PH8

Article No. : 1PH8138-7DF10-2BB1

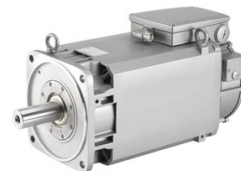


Figure similar

Client order no. :  
Order no. :  
Offer no. :  
Remarks :

Item no. :  
Consignment no. :  
Project :

### Engineering data

		P <sub>N</sub> [kW]	M <sub>N</sub> [Nm]	I <sub>N</sub> [A]	U <sub>N</sub> [V]	f <sub>N</sub> [Hz]	n <sub>N</sub> [rpm]	M <sub>max</sub> [Nm]	I <sub>max</sub> [A]	n <sub>max</sub> [rpm]	M <sub>0</sub> [Nm]	I <sub>0</sub> [A]	η	cos φ	I <sub>μ</sub> [A]
Y	ALM 400V	43.5	235.0	85.0	415	58.3	1,750	520	180.0	6,500	260.0	92	0.921	0.754	0.0
	BLM/SLM 400V	38.0	240.0	87.0	361	50.0	1,500	520	180.0	6,500	260.0	92	0.918	0.752	0.0
	ALM 480V	51.0	220.0	81.0	498	73.3	2,200	520	180.0	6,500	260.0	92	0.922	0.769	0.0
	BLM/SLM 480V	47.0	225.0	83.0	448	66.7	2,000	520	180.0	6,500	260.0	92	0.920	0.777	0.0

### Mechanical data

Motor type	Reluctance performance
Efficiency class	IE2
Shaft height	132
Cooling	Forced ventilation NDE -> DE
Vibration severity grade	RIA
Shaft and flange accuracy	R
Degree of protection	IP55
Design acc. to Code I	IM B3 (IM V5, IM V6, IM B6, IM B7, IM B8)
Temperature monitoring	Pt1000 temperature sensor in the stator winding
Color	Standard (Anthracite RAL 7016)
Type of the bearing	Standard with fixed bearing
Shaft end	Feather key with half key balancing
Encoder system	Incremental encoder 22 bit with commutation position 11 bit, max. encoder speed = 12000 rpm

### External fan

#### Max. power consumption

3 AC 400 V / 50 Hz (±10%)	0.11 A
3 AC 400 V / 60 Hz (±10%)	0.13 A
3 AC 480 V / 60 Hz (±10%)	0.13 A

<sup>1)</sup> at a rated frequency of 4 kHz and a speed range of up to 5000 rpm

### Physical constants

Thermal time constant	20 min
Moment of inertia	930 kgcm <sup>2</sup>
Weight (approx.)	145 kg

### Connection

Type of electrical connection	Terminal box
Position of the connection	NDE top
Power connection	left
Signal connection	DE
Terminal box designation	gk843

### Cooling data and sound pressure level

Airflow, min.	0.09 m <sup>3</sup> /s
Sound pressure level LpA(1m) motor + external fan operation 50 HZ rated load, tolerance + 3dB	70 dB <sup>1)</sup>
Air discharge	axial
Pressure drop	140 Pa