

## Data sheet for SIMOTICS M-1PH8

Article No. : 1PH8165-1DG00-0MA1

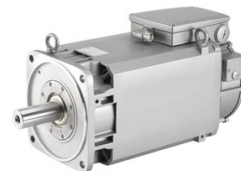


Figure similar

Client order no. :  
Order no. :  
Offer no. :  
Remarks :

Item no. :  
Consignment no. :  
Project :

### Engineering data

		$P_N$ [kW]	$M_N$ [Nm]	$I_N$ [A]	$U_N$ [V]	$f_N$ [Hz]	$n_N$ [rpm]	$M_{max}$ [Nm]	$I_{max}$ [A]	$n_{max}$ [rpm]	$M_0$ [Nm]	$I_0$ [A]	$\eta$	$\cos \phi$	$I_{\mu}$ [A]
Y	ALM 400V	44.0	183.0	85.0	394	77.4	2,300	620	278.0	10,000	302.0	122	0.932	0.860	31.0
	BLM/SLM 400V	41.0	196.0	88.0	350	67.4	2,000	620	278.0	10,000	302.0	122	0.927	0.870	32.4
	ALM/BLM/SLM 480V	50.0	180.0	85.0	440	89.0	2,650	620	278.0	10,000	302.0	122	0.932	0.870	28.9

### Mechanical data

Motor type	Squirrel cage asynchronous motor
Shaft height	160
Cooling	Forced ventilation DE -> NDE
Vibration severity grade	SPECIAL/B
Shaft and flange accuracy	SPECIAL
Degree of protection	IP55
Design acc. to Code I	IM B3 (IM V5, IM V6, IM B6, IM B7, IM B8)
Temperature monitoring	Pt1000 temperature sensor in the stator winding
Color	Standard (Anthracite RAL 7016)
Type of the bearing	High Performance
Shaft end	Plain shaft
Encoder system	Incremental encoder 22 bit with commutation position 11 bit, max. encoder speed = 12000 rpm

### External fan

#### Max. power consumption

3 AC 400 V / 50 Hz ( $\pm 10\%$ )	0.16 A
3 AC 400 V / 60 Hz ( $\pm 10\%$ )	0.21 A
3 AC 480 V / 60 Hz ( $\pm 10\%$ )	0.21 A

<sup>1)</sup> at a rated frequency of 4 kHz and a speed range of up to 5000 rpm

### Physical constants

Thermal time constant	35 min
Moment of inertia	2,320 kgcm <sup>2</sup>
Weight (approx.)	230 kg

### Connection

Type of electrical connection	Terminal box
Position of the connection	NDE top
Power connection	right
Signal connection	DE
Terminal box designation	gk863

### Cooling data and sound pressure level

Airflow, min.	0.16 m <sup>3</sup> /s
Sound pressure level LpA(1m) motor + external fan operation 50 HZ rated load, tolerance + 3dB	73 dB <sup>1)</sup>
Air discharge	axial
Pressure drop	200 Pa