

Data sheet for SIMOTICS S-1FG1

Article No. : **1FG1508-1RD23-1AD2-Z**
D11+G23+K12

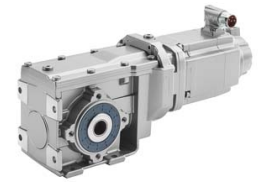


Figure similar

Client order no. :
 Order no. :
 Offer no. :
 Remarks :

Item no. :
 Consignment no. :
 Project :

Gearbox data

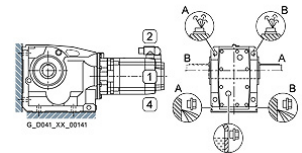
Gear box type	K79
Gearbox basic type	Bevel geared
Gearbox size	79
Transmission stages	3
Transmission (ratio)	137.35
Gear number relation	9065/66
Output moment maximum (short-time)	840 Nm
max. input speed (briefly)	4,500 rpm
Output speed short-time	33 rpm
Emergency off output moment (1000 cycles)	1,390 Nm
Radial force maximum	13,900 N
Max. permissible radial force with Mmax	13,900 N
Moment of inertia	0.42 kgcm ²
Torsional stiffness	73 Nm/°
Efficiency	0.92
Mounting position	M1-A
Mounting type	Foot-mounted
Output shaft version	Solid shaft standard
Output shaft dimension	V40 x 80 mm
Gearbox flange diameter	-/-
Figure 2 torque support	-

General tech. specifications

Degree of protection	IP65
Color of the housing	Standard painting (Anthracite RAL 7016)
Specification	CE / UL / CSA / EAC / cRUus
Net weight	36.94 kg
1 m-sound pressure level L _{pA} (Tol.+3dB(A))	65
Plug position	top (default) (2)
Adapter flange position	top (default) (2)

Lubrication and sealing

Gear oil	Poly-alpha-olefin oil CLP ISO PAO VG220
Output shaft sealing	Seal longer service life
Oil charge	0.95 l



Motor data

Motor type	Permanent-magnet synchronous motor
Motor type	Compact
DC-link voltage, max.	270...300V
Shaft height	48 mm
Cooling	Natural cooling
Rated speed	3,000 rpm
Rated torque (100K)	2.35 Nm
Rated power	0.74 kW
Rated current (100K)	3.35 A
Static torque	2.85 Nm
Static current	3.85 A
Moment of inertia	2.90 kgcm ²
Efficiency η	89 %
Temperature monitoring	Pt1000 temperature sensor
Connector size	1
Encoder system	Encoder AM20DQI: absolute encoder 20 bits (resolution 1048576, encoder-internal 512 S/R) + 12 bits multi-turn (traversing range 4096 revolutions)

Limiting data

Maximum speed (short-time)	9,000 rpm
Maximum torque	10.50 Nm
Motor current short term	13.8 A

Optimum operating point

Optimum speed	3,000 rpm
Optimum power	0.74 kW

Data sheet for SIMOTICS S-1FG1

Article No. : 1FG1508-1RD23-1AD2-Z
D11+G23+K12

Recommended Motor Module

Rated inverter current	3.9 A
Maximum inverter current	7.8 A
Maximum torque	6.0 Nm

Standards

Compliance with standards	CE / UL / CSA / EAC / cRUus
CE marking	EN 60034

Options

D11	M1-A for bevel and worm gearboxes
G23	Seal longer service life
K12	Poly-alpha-olefin oil CLP ISO PAO VG220

Info servo geared motor

Outside the standard temperature range of -10 to +40 °C, further selectable options must be observed, in addition to the lubricant selection.

Further, you have to check the suitability of the components and options used for the requested temperature range.