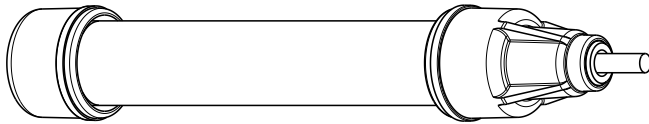


HLS27 Hazardous Location Segmented LED Strip Light



Datasheet

Banner's HLS27 Hazardous Location Segmented LED Strip Light has a sturdy aluminum housing and is encased in a shatterproof, UV-stabilized, polycarbonate shell, making it ideal for harsh indoor and outdoor applications.



- Ultra-bright, multi-segment indicator
- Models with 2 or 3 segments available in two different segment sizes
- Rugged, water-resistant IEC IP66, IEC IP67 design
- Four available lengths: 285 mm, 430 mm, 570 mm, or 850 mm
- Standard and optional 300 series stainless steel mounting brackets protect against impact
- Certification for cULus and ATEX/IECEX, see details in specifications



Important: Read the following instructions before operating the light. Please download the complete HLS27 Hazardous Location Segmented LED Strip Light technical documentation, available in multiple languages, from www.bannerengineering.com for details on the proper use, applications, Warnings, and installation instructions of this device.

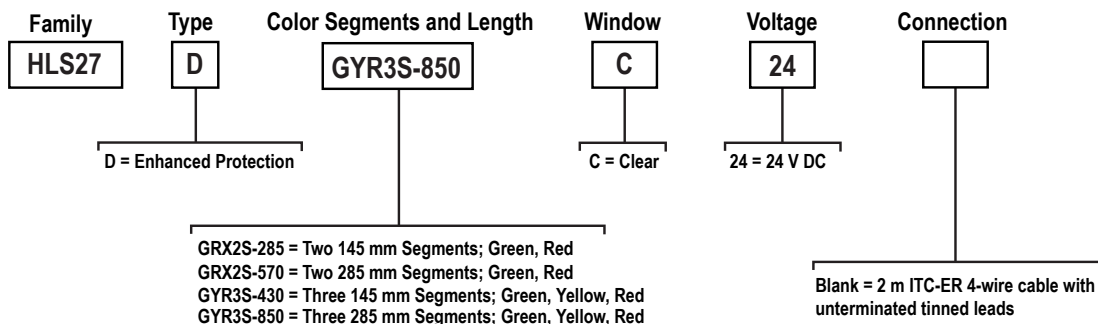


Important: Lea el siguiente instructivo antes de operar el luminario. Por favor descargue desde www.bannerengineering.com toda la documentación técnica de los HLS27 Hazardous Location Segmented LED Strip Light, disponibles en múltiples idiomas, para detalles del uso adecuado, aplicaciones, advertencias, y las instrucciones de instalación de estos dispositivos.



Important: Lisez les instructions suivantes avant d'utiliser le luminare. Veuillez télécharger la documentation technique complète des HLS27 Hazardous Location Segmented LED Strip Light sur notre site www.bannerengineering.com pour les détails sur leur utilisation correcte, les applications, les notes de sécurité et les instructions de montage.

Models



| Type | Protection | Suitable for ATEX / IECEx | Suitable for NEC & CEC | | |
|------|---------------------|------------------------------|------------------------------|---|----------------------------|
| D | Enhanced Protection | Gas Zone: 2 Dust Zone: 22 | Gas Zone: 2 Dust Zone: 22 | Class I Division 2 Class II Division 2 | Class III Division 1 and 2 |



Installation Instructions

Hazardous Location Applications



WARNING:

- **Hazardous Locations**
- It is the user's responsibility to ensure that all local, state, and national laws, rules, codes, or regulations relating to the installation and use of this device in any particular application are satisfied. This device must be installed by Qualified Persons, in accordance with this document and applicable regulations.
- A Qualified Person is a person who, by possession of a recognized degree or certificate of professional training, or who, by extensive knowledge, training and experience, has successfully demonstrated the ability to solve problems relating to the subject matter and work.



WARNING: The hazardous location mounting hardware is designed to help protect the HLS27 light from damage during impact and must be used in all hazardous location applications. Failure to use the Banner supplied mounting hardware correctly will void the hazardous location rating of the light.



CAUTION:

- **Electrostatic Discharge (ESD) Special Conditions for Safe Use**
- Parts of the enclosure are non-conducting and can generate an ignition-capable level of ESD.
- Clean the equipment with only a damp cloth.

General Notes and Conditions for Safe Use:

- See Specifications and Wiring Diagrams for important information concerning entity parameters, permissible locations, electrical connections and certifications.
- In addition to the warning above concerning user responsibility, the installation must comply with the following:
 - All installations must comply with all manufacturer's instructions.
 - This device is provided with a PLTC-ER/ITC-ER cable and must be installed in accordance with the following:
 - NEC Article 501.10 (B) for Class I Division 2
 - NEC Article 502.10 (B) for Class II Division 2
 - NEC Article 503.10 (A) or (B) for Class III Division 1 or 2 respectively
 - Canadian Electrical Code (CSA C22.1) for Canadian Installations
 - Section 9 of IEC 60079-14 for ATEX/IECEX locations
 - The PLTCER/ITC-ER cable shall be installed in accordance with the provisions of NEC Article 725 (PLTC-ER) or 727.4 (ITC-ER) for Class I Division 2, Class II Division 2, and Class III Division 1 and 2 locations
 - The cable shall be terminated with a fitting certified for the appropriate location classification
 - The device must be powered by a class 2 power supply
- Do not attempt any repairs to this device; it contains no field-replaceable parts or components. Tampering and/or replacement with non-factory components may adversely affect the safe use of the system.
- The nonconducting materials of this device may be susceptible to ignition-capable level of electrostatic charging and precautions must be taken to avoid this. The user/installer shall ensure that the equipment is not installed in a location where it may be subjected to external conditions (such as high-pressure steam) which are conducive to creating a build-up of electrostatic charges.
- The user/installer must take suitable precautions to prevent the device from being adversely affected by aggressive substances, such as acidic liquids or gases that may attack metals, or solvents that may affect polymeric (plastic) materials. Suitable precautions include routine inspection or maintenance procedures require replacement of damaged devices or establishing from the materials data sheet that the device is resistant to specific chemicals. These precautions must ensure that the type of protection is not compromised.

Wiring Diagrams

| Unterminated | Wire Color | Description |
|--------------|------------|-------------|
| | Brown | Input 1 |
| | White | Input 3 |
| | Blue | DC common |
| | Black | Input 2 |

| 3 Segment Strip Lights | | | | 2 Segment Strip Lights | | |
|------------------------|---------------------|---------------------|------------------------|------------------------|---------------------|--------------------|
| Input 1: Brown Wire | Input 2: Black Wire | Input 3: White Wire | LED Color | Input 1: Brown Wire | Input 2: Black Wire | LED Color |
| - | - | - | Light OFF | - | - | Light OFF |
| +24 V DC | - | - | Segment 1 ON | +24 V DC | - | Segment 1 ON |
| - | +24 V DC | - | Segment 2 ON | - | +24 V DC | Segment 2 ON |
| +24 V DC | +24 V DC | - | Segment 1 and 2 ON | +24 V DC | +24 V DC | Segment 1 and 2 ON |
| - | - | +24 V DC | Segment 3 ON | | | |
| +24 V DC | - | +24 V DC | Segment 1 and 3 ON | | | |
| - | +24 V DC | +24 V DC | Segment 2 and 3 ON | | | |
| +24 V DC | +24 V DC | +24 V DC | Segment 1, 2, and 3 ON | | | |

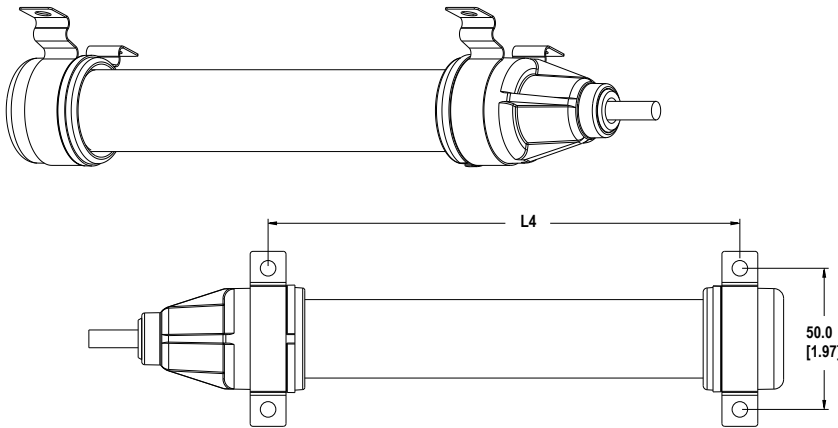
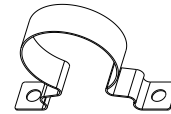
Mounting Instructions

Multiple mounting options are available for the HLS27 in hazardous locations. In the two options listed below, the mounting brackets must be spaced a distance of (L4) apart to ensure the device meets impact protection standards for hazardous locations.

Included Mounting Hardware (LMBHLS27S – 2 Brackets)

When using the standard mounting hardware, the mounting hole centers for each individual bracket must be spaced 50.0 mm (1.97 inches) from one another. This spacing is critical for the bracket to provide the required impact protection and prevent rotation of the light within the bracket.

The stainless-steel bracket is designed to be used with M5 or #10 stainless-steel hardware.



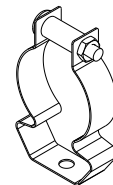
| Models | L4 |
|--------------|------------------|
| HLS27..285.. | 309 mm (12.2 in) |
| HLS27..430.. | 450 mm (17.7 in) |
| HLS27..570.. | 591 mm (23.3 in) |
| HLS27..850.. | 873 mm (34.4 in) |

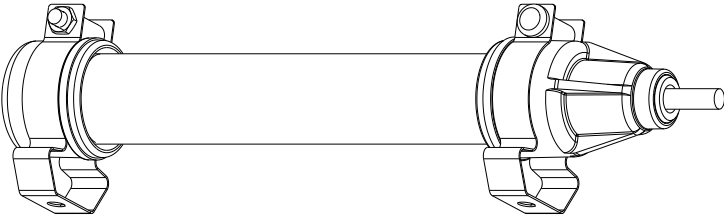
Optional Mounting Hardware (LMBHLS27O – 2 Brackets and Hardware) Purchased Separately

When using the optional mounting hardware, the head of the fastener used must not exceed 5.0 mm (0.2 inches) in height. Fasteners exceeding this height could damage the light housing during impact situations.

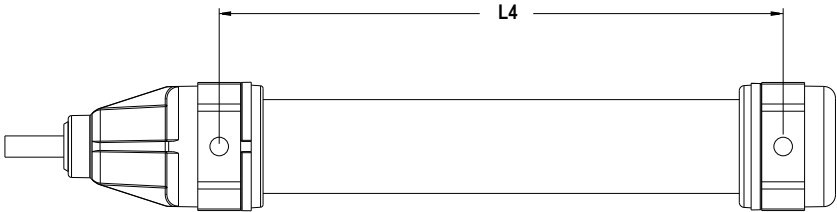
When using the optional mounting hardware, the supplied spacer must be used with the bolt to maintain the correct bracket shape. This shape is critical for the bracket to provide the required impact protection.

The stainless-steel bracket is designed to be used with M5 or #10 stainless-steel hardware.





| Models | L4 |
|--------------|------------------|
| HLS27..285.. | 309 mm (12.2 in) |
| HLS27..430.. | 450 mm (17.7 in) |
| HLS27..570.. | 591 mm (23.3 in) |
| HLS27..850.. | 873 mm (34.4 in) |



Light Anti-Rotation Pads

In applications where vibration is a concern or when light orientation is critical, use anti-rotation pads to prevent the light from rotating within the mounting brackets. Light rotation caused by vibration may be more pronounced with longer length lights. Attach the anti-rotation pads to the brackets, as shown in the figures, with the adhesive side applied to the bracket.

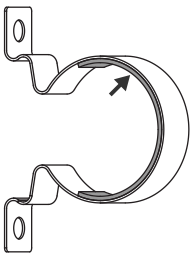


Figure 1. Included Mounting Hardware with Anti-Rotation Pads



Note: When using the optional mounting hardware, cut the anti-rotation pad and apply it to both sides of the mounting bracket as shown.

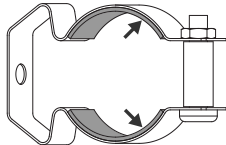


Figure 2. Optional Mounting Hardware with Anti-Rotation Pads

Specifications

Supply Voltage

24 V DC (+ 20% / - 10%)
 Use only with suitable Class 2 power supply (UL) or a SELV power supply (CE)
 See electrical characteristics on product label

| Lighted Length | Segments | Typical Current (A) at 25 °C per Segment ¹ | Typical Current (A) at 25 °C for all Segments | Maximum Current (A) |
|----------------|----------|---|---|---------------------|
| 285 mm | 2 | 0.155 | 0.360 | 0.4 |
| 430 mm | 3 | 0.155 | 0.540 | 0.6 |
| 570 mm | 2 | 0.315 | 0.630 | 0.8 |
| 850 mm | 3 | 0.315 | 0.945 | 1.2 |

Supply Protection Circuitry

Protected against reverse polarity and transient voltages

Construction

Clear anodized aluminum housing
 UV stabilized polycarbonate outer housing

Environmental Rating

IEC IP66, IEC IP67

Connections

2 m (6.3 ft) long, 5.3 mm (0.21 inch) diameter UL type PLTC-ER or ITC-ER cable with unterminated leads; PVC jacket, paper separator

Vibration and Mechanical Shock

Vibration: 10 Hz to 55 Hz, 1.0 mm peak-to-peak amplitude per IEC 60068-2-6
 Shock: 15G 11 ms duration, half sine wave per IEC 60068-2-27

Operating Conditions

-35 °C to +50 °C (-31 °F to +122 °F)
 90% maximum relative humidity (non-condensing)
Storage Temperature: -35 °C to +70 °C (-31 °F to +158 °F)

¹ Values are shown at 25 °C. Current and lumen values decrease 0.4% per 1 °C from the ambient temperature. For example, an 850 mm unit will have a maximum current of 0.851 A at -40 °C and 1.2 A at +50 °C.

Mounting

Bracket kit LMBHLS27S included (2 brackets for use with HLS27 Hazardous Location LED Strip Light)
 Optional bracket kit LMBHLS27O (2 brackets and hardware for use with HLS27 Hazardous Location LED Strip Light)

Light Characteristics

| Color | Dominant Wavelength (nm) or Color Temperature | Lighted Length Lumens (Typical at 25 °C) [†] | |
|--------|---|---|----------------|
| | | 285 and 430 mm | 570 and 850 mm |
| Green | 525 nm | 160 | 425 |
| Yellow | 580 nm | 225 | 605 |
| Red | 625 nm | 75 | 195 |

Approvals

NEC and CEC:
 -35°C ≤ T_a ≤ +50°C
 Gas & Vapors: Class I Zone 2 IIC T4 / Class I Div 2 Groups ABCD T4
 Dust: Class II Zone 22 IIIC T100°C / Class II Div 2 Groups FG T5
 Fibers: Class III Div 1 and Div 2 T5

ATEX/IECEX:
 -35°C ≤ T_a ≤ +50°C
 Gas & Vapors: II 3 G Ex ec IIC T4 Gc (Group IIC Zone 2)
 Dust: II 3 D Ex tc IIIC T85°C Dc (Group IIIC Zone 22)



UL/cULus E467619

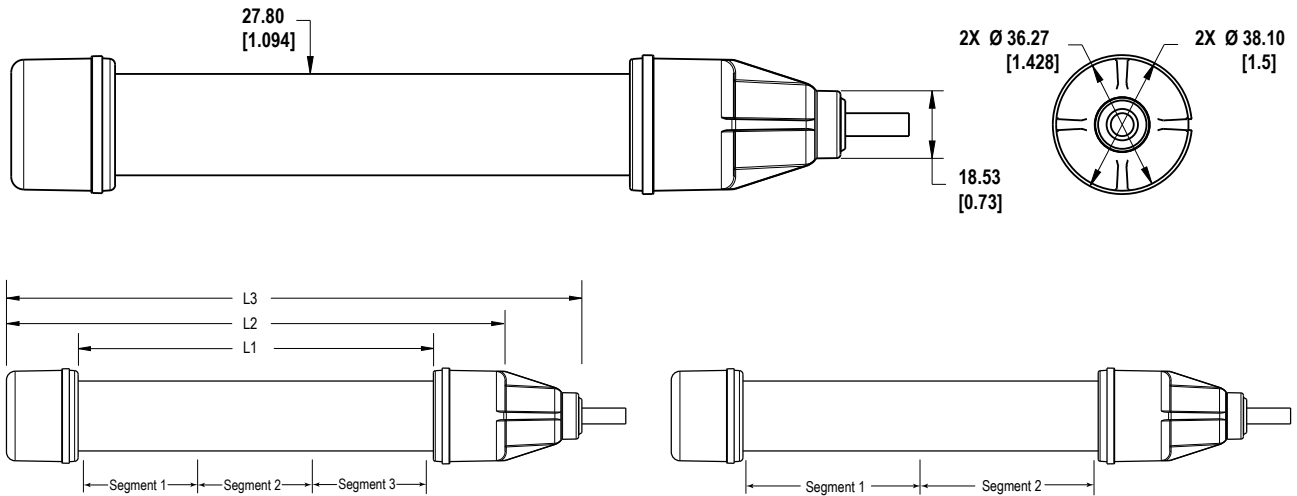


IECEx UL 18.0115X : DEMKO 18 ATEX 2122X



Dimensions

All measurements are listed in millimeters, unless noted otherwise.



| Models | L1 | L2 | L3 | Segment 1 | Segment 2 | Segment 3 |
|--------------|------------------|------------------|------------------|------------------|------------------|------------------|
| HLS27..285.. | 282 mm (11.1 in) | 339 mm (13.4 in) | 370 mm (14.6 in) | 143 mm (5.7 in) | 143 mm (5.7 in) | - |
| HLS27..430.. | 423 mm (16.7 in) | 480 mm (18.9 in) | 511 mm (20.1 in) | 143 mm (5.7 in) | 143 mm (5.7 in) | 143 mm (5.7 in) |
| HLS27..570.. | 564 mm (22.2 in) | 621 mm (24.5 in) | 652 mm (25.7 in) | 286 mm (11.3 in) | 286 mm (11.3 in) | - |
| HLS27..850.. | 846 mm (33.3 in) | 903 mm (35.6 in) | 934 mm (36.8 in) | 286 mm (11.3 in) | 286 mm (11.3 in) | 286 mm (11.3 in) |

Accessories

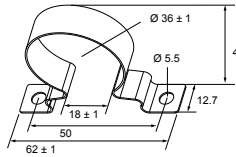
Brackets

All measurements are listed in millimeters, unless noted otherwise.

The following brackets can be used with the HLS27 Hazardous Location Segmented LED Strip Light.

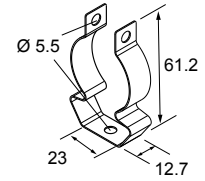
LMBHLS27S

- Set of 2 brackets
- Impact absorbing
- 300 series stainless steel
- Clearance for M5 or #10 hardware



LMBHLS27O

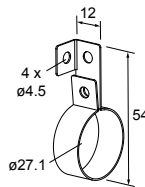
- Set of 2 brackets
- Impact absorbing clamp
- 300 series stainless steel
- M5 stainless steel hardware included



The following brackets can be used with the HLS27 Hazardous Location Segmented LED Strip Light for North America applications, but will not meet the required specifications for ATEX/IECEx.

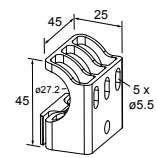
LMBWLS27H

- 300 series stainless steel mounting brackets
- M4 stainless steel hardware included



LMBWLS27U

- Clear copolyester
- Clearance for M5 or #10 hardware
- Clamps securely around the light body



Banner Engineering Corp. Limited Warranty

Banner Engineering Corp. warrants its products to be free from defects in material and workmanship for one year following the date of shipment. Banner Engineering Corp. will repair or replace, free of charge, any product of its manufacture which, at the time it is returned to the factory, is found to have been defective during the warranty period. This warranty does not cover damage or liability for misuse, abuse, or the improper application or installation of the Banner product.

THIS LIMITED WARRANTY IS EXCLUSIVE AND IN LIEU OF ALL OTHER WARRANTIES WHETHER EXPRESS OR IMPLIED (INCLUDING, WITHOUT LIMITATION, ANY WARRANTY OF MERCHANTABILITY OR FITNESS FOR A PARTICULAR PURPOSE), AND WHETHER ARISING UNDER COURSE OF PERFORMANCE, COURSE OF DEALING OR TRADE USAGE.

This Warranty is exclusive and limited to repair or, at the discretion of Banner Engineering Corp., replacement. **IN NO EVENT SHALL BANNER ENGINEERING CORP. BE LIABLE TO BUYER OR ANY OTHER PERSON OR ENTITY FOR ANY EXTRA COSTS, EXPENSES, LOSSES, LOSS OF PROFITS, OR ANY INCIDENTAL, CONSEQUENTIAL OR SPECIAL DAMAGES RESULTING FROM ANY PRODUCT DEFECT OR FROM THE USE OR INABILITY TO USE THE PRODUCT, WHETHER ARISING IN CONTRACT OR WARRANTY, STATUTE, TORT, STRICT LIABILITY, NEGLIGENCE, OR OTHERWISE.**

Banner Engineering Corp. reserves the right to change, modify or improve the design of the product without assuming any obligations or liabilities relating to any product previously manufactured by Banner Engineering Corp. Any misuse, abuse, or improper application or installation of this product or use of the product for personal protection applications when the product is identified as not intended for such purposes will void the product warranty. Any modifications to this product without prior express approval by Banner Engineering Corp will void the product warranties. All specifications published in this document are subject to change; Banner reserves the right to modify product specifications or update documentation at any time. Specifications and product information in English supersede that which is provided in any other language. For the most recent version of any documentation, refer to: www.bannerengineering.com.

For patent information, see www.bannerengineering.com/patents.

Repairs

Contact Banner Engineering for troubleshooting of this device. **Do not attempt any repairs to this Banner device; it contains no field-replaceable parts or components.** If the device, device part, or device component is determined to be defective by a Banner Applications Engineer, they will advise you of Banner's RMA (Return Merchandise Authorization) procedure.



Important: If instructed to return the device, pack it with care. Damage that occurs in return shipping is not covered by warranty.

Mexican Importer

Banner Engineering de México, S. de R.L. de C.V.
 David Alfaro Siqueiros 103 Piso 2 Valle oriente
 San Pedro Garza García Nuevo León, C. P. 66269
 81 8363.2714