




Main

Range of product	Lexium PAS E
Product or component type	Portal axis
Product specific application	For 1 direction
Load position	On carriage
Drive type	Toothed belt
Guide type	Ball

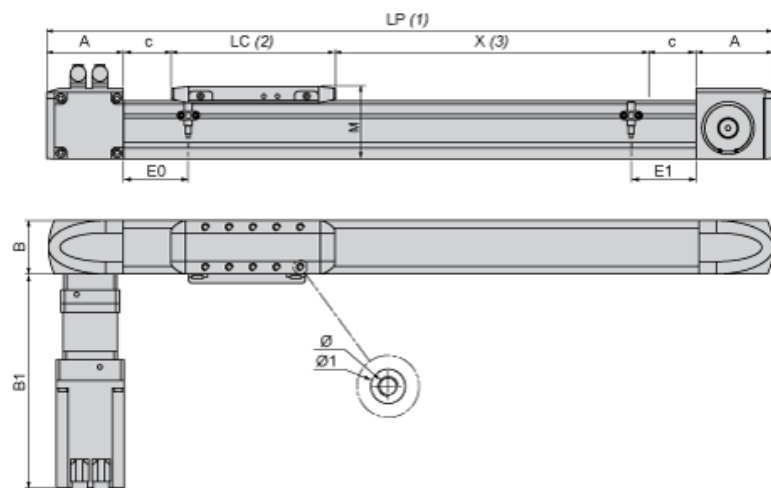
Complementary

Operating position	Horizontal
Permanent permissible load	12 kg
Distance per revolution	155 mm
Operating force	≤ 2810 N for Z axis ≤ 2810 N for Y axis ≤ 800 N for X axis
Maximum actuation speed	2 m/s
Maximum acceleration	15 m/s ²
Torque value	≤ 74 N.m for Z axis ≤ 74 N.m for Y axis ≤ 19 N.m for X axis ≤ 20 N.m driving torque
Operating travel	500 mm
Product weight	12.2 kg total 1 kg of carriage 7.5 kg at 0 stroke with carriage and motor
Repeat accuracy	+/- 0.05 mm
Outer dimension	60 x 60 mm
Mechanical service life	30000 km
Associated module	LXM32.D12N4 servo drive (not supplied) PLE60 planetary gearbox, reduction ratio: 5:1 (supplied) BMH0702P06A2A servo motor (supplied)

Offer Sustainability

Sustainable offer status	Not Green Premium product
Product environmental profile	Available  Download Product Environmental
Product end of life instructions	Need no specific recycling operations

Size Characteristics

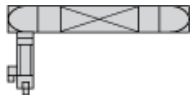


- (1) LP : total length of axis
(2) LC : length of carriage
(3) X : Stroke, refer to product characteristics.

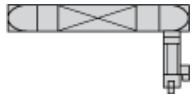
A	mm	80
in.	3.15	
B	mm	60
in.	2.36	
B1	mm	278
in.	10.94	
c	mm	15
in.	0.59	
E0	mm	33
in.	1.30	
E1	mm	33
in.	1.30	
LC	mm	206
in.	8.11	
LP	mm	= 190 + LC + X
in.	= 7.48 + LC + X	
M	mm	75
in.	2.95	
Ø	mm	M5 X 12
in.	M5 X 0.47	
Ø1	mm	8 ^{H7} X 2.1
in.	8 ^{H7} X 0.08	

Servo Motor Mounting

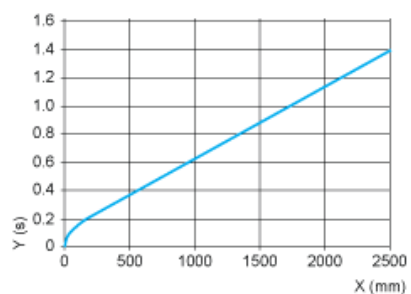
Standard servo motor mounting



Servo motor mounted on the left



Axis Positioning Time as a Function of the Stroke



X : Stroke

Y : Positioning time

Forces and Torques Exerted on the Lexium PAS E Portal Axis

