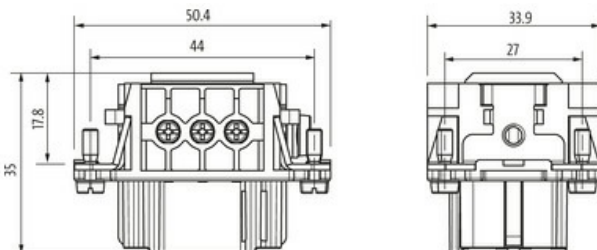
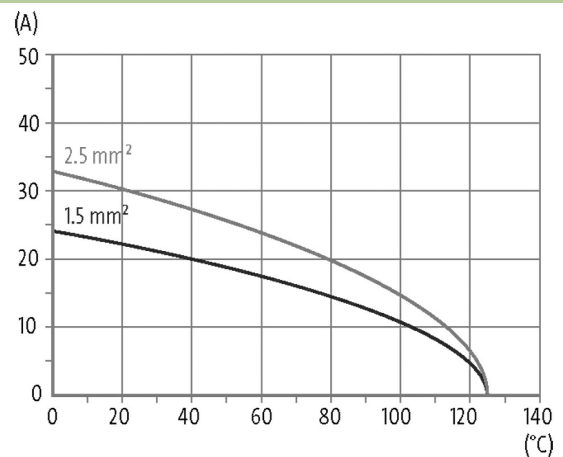
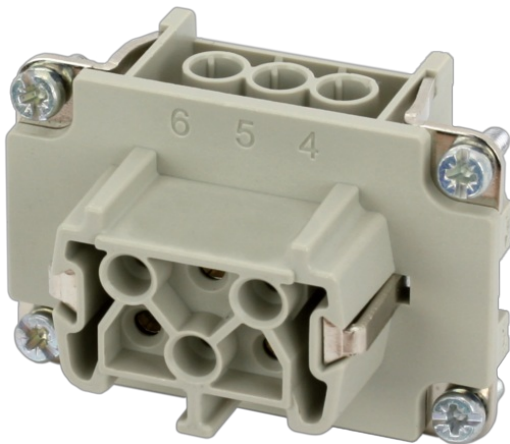


B6 female 6-pole, screw t., 500 V, 16 A

B6
 Female
 6-pole
 Screw terminal
 Technical data will be only guaranteed with Murrelektronik components.

[Link to Product](#)**Illustration**

Product may differ from Image

**Technical Data**

Operating voltage	500 V AC/DC
Rated surge voltage	6.0 kV
Operating current	16 A
No. of poles	6 + PE
Material group	IIIb
Mating cycles	min. 500
Connection	Screw terminal
Connection cross section	0.5...2.5 mm ² (AWG 20...14)
Holding force	> 150 N
Tightening torque (clamp screw)	min. 0.5 Nm
Insertion and withdrawal force	< 35 N
Stripping length	7.5 mm

Isolation resistance	$\geq 10^8 \Omega$
Contact resistance	$\leq 5 \text{ m}\Omega$
Over voltage category	III
Wire-Ø incl. isolation	max. 3.6 mm

General data

Material (contact)	Brass
Material (contact surface)	Ag
Pollution Degree	3
Temperature range	-40...+125 °C
Material (contact carrier)	PA GF
Flammability class	V-0 (acc. to UL 94)
Size	B6
Type	Female
Climatic category	40/125/10
Dimensions H×W×D	35×33.9×50.4 mm

Cables

Current load capacity	see derating curve
-----------------------	--------------------

Commercial data

country of origin	CZ
customs tariff number	85366990
EAN	4048879637657
eClass	27143424
Packaging unit	1.000