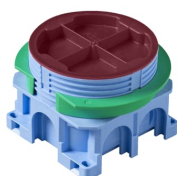


PRODUCT-DETAILS

# AU60.5

## AU60.5 Mounting box



### General Information

Extended Product Type	AU60.5
Product ID	2TKA00001481
EAN	6438199003405
Catalog Description	AU60.5 Mounting box
Long Description	The mounting box has a total of six knock-out inlets, two of which are on the same side. The bottom of the box provides access for two rear inlets. The green adapter ring, delivered with the box, is used in single-board walls (12-13 mm). The ring is removed when the wall thickness is two boards (24-26 mm). The boxes can be connected to each other with the PMR474 interconnector. Made of halogen free material (IEC/61249-2-21) and fulfills the requirements of the glow wire test according to the standard IEC/EN60670: 2005 (850 °C).

### Ordering

E-Number (Sweden)	1422245
EAN	6438199003405
Minimum Order Quantity	80 piece
Customs Tariff Number	39259080

### Dimensions

Product Net Width	0.071 m
Product Net Height	0.057 m
Product Net Depth / Length	71 mm

Product Net Weight	0.0575 kg
--------------------	-----------

### Container Information

Package Level 1 Units	box 80 piece
Package Level 1 Width	0.4 m
Package Level 1 Height	0.26 m
Package Level 1 Depth / Length	0.4 m
Package Level 1 Gross Weight	5 kg
Package Level 1 EAN	6438199003405
Package Level 3 Units	pallet (lift) 1440 piece
Package Level 3 Width	1.2 m
Package Level 3 Height	1.1 m
Package Level 3 Depth / Length	0.8 m
Package Level 3 Gross Weight	110 kg

### Additional Information

Color	Blue
Design	Device connection box (round/square)
Interior Depth	54 mm
Material	Plastic
Mounting Type	Flush mounted (plaster)
Number of Poles	0
Product Main Type	Flush-mounted boxes
Product Name	Mounting box
Shape	Round
Surface Finishing	Untreated

### Certificates and Declarations (Document Number)

Data Sheet, Technical Information	9AKK10103A2549
Declaration of Conformity - CE	9AKK106713A4627
Instructions and Manuals	9AKK10103A2549
RoHS Information	9AKK106713A4634

### Classifications

ETIM 5	EC002601 - Box/housing for built-in mounting in the wall/ceiling
ETIM 6	EC002601 - Box/housing for built-in mounting in the wall/ceiling
ETIM 7	EC002601 - Box/housing for built-in mounting in the wall/ceiling
WEEE Category	Product Not in WEEE Scope

---

## Categories

---

Low Voltage Products and Systems → Installation Materials → Flush Mounted Boxes → Plastic Installation Boxes (for WA Inserts)  
→ Hollow Wall

