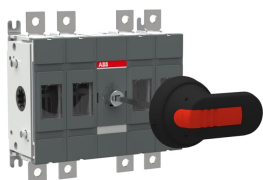


PRODUCT-DETAILS

OTDC160E22P

OTDC160E22P DC Switch-disconnector



General Information

Extended Product Type	OTDC160E22P
Product ID	1SCA125845R1001
EAN	6417019558462
Catalog Description	OTDC160E22P DC Switch-disconnector
Long Description	OTDC160E22P DC Switch-disconnector, IP65 protected & padlockable handle, adjustable shaft and terminal bolt kit included, Base mounting, IEC 1000 VDC 160 A

Ordering

Minimum Order Quantity	1 piece
Customs Tariff Number	85363090
Last Ordering Date	2021-11-30 All Countries
Country of Origin	Finland (FI)

Popular Downloads

Data Sheet, Technical Information	1SCC301022C0201
Instructions and Manuals	1SCC301081M0206
Mechanical Drawings	OTDC100_200E22.igs 1SCC307583F0201 1SCC307584F0201
Wiring Diagram	1SCC301033K0201

Dimensions

Product Frame Size	S
Product Net Width	185.4 mm 7.3 in
Product Net Height	262 mm 10.3 in
Product Net Depth / Length	90.5 mm 3.6 in
Product Net Weight	2.4 kg 5.4 lb

Technical

Connection Configuration	Double circuit 4a, 4c
Rated Operational Current DC-21B (I_e)	(1000 V) 160 A
Conventional Free-air Thermal Current (I_{th})	160 A
Conventional Thermal Current (I_{the})	Fully Enclosed 160 A
Rated Impulse Withstand Voltage (U_{imp})	12 kV
Rated Insulation Voltage (U_i)	1500 V
Rated Operational Voltage	1000 V
Rated Short-Circuit Making Capacity (I_{cm})	(1000 V DC) 10 kA
Rated Short-time Withstand Current (I_{cw})	(1000 V DC) 10 kA for 1 s 5 kA for 0.1 s 10 kA
Power Loss	at Rated Operating Conditions per Pole 4 W
Pollution Degree	3
Handle Color	Black
Handle Length	65 mm 2.6 in
Handle Type	Pistol handle
Shaft Diameter	6 mm 0.24 in
Shaft Length	210 mm 8.3 in
Switches Operating Mechanism	Mechanism Between the Poles 22 (Between the Poles)
Position of Line Terminals	Top In - Bottom Out Bottom In - Top Out
Operating Mode	Front Operated
Standards	IEC 60947-1, -3
Special Functions	No
Mounting Type	Base mounting
Number of Circuits	2
Number of Poles	4
Degree of Protection	Front IP20
Terminal Type	Lug terminals
Terminal Width	19.5 mm 0.77 in
Tightening Torque	Cable Lug 15..22 N·m
Utilization	Photovoltaic
Utilization Category	Switching of resistive loads, including moderate overloads - occasional

actuation (DC-21B)

Environmental

RoHS Status	Following EU Directive 2011/65/EU
Environmental Information	NA

Certificates and Declarations (Document Number)

CCC Certificate	CQC2013010302611671
Declaration of Conformity - CE	1SCC301201D2703
DNV GL Certificate	1SCC301231D0201
Environmental Information	NA
Instructions and Manuals	1SCC301081M0206
RoHS Information	1SCC301201D2703

Container Information

Package Level 1 Units	box 1 piece
Package Level 1 Width	220 mm 8.7 in
Package Level 1 Depth / Length	260 mm 10.2 in
Package Level 1 Height	155 mm 6.1 in
Package Level 1 Gross Weight	2.8 kg 6.2 lb
Package Level 1 EAN	6417019558462

Classifications

Object Classification Code	Q
ETIM 5	EC000216 - Switch disconnecter
ETIM 6	EC000216 - Switch disconnecter
ETIM 7	EC000216 - Switch disconnecter
WEEE Category	5. Small Equipment (No External Dimension More Than 50 cm)

Categories

Low Voltage Products and Systems → Switches → DC Switch-Disconnectors

