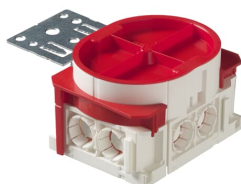


PRODUCT-DETAILS

# AU81.2

## AU81.2 Mounting box



### General Information

Extended Product Type	AU81.2
Product ID	2TKA00003223
EAN	6438199004846
Catalog Description	AU81.2 Mounting box

Long Description

The box is mentioned for flat socket outlet ( for example 302EUJT ) installations with the flexible pipe. There is six knock outs for 16 mm pipes and two for the 20 mm pipe. In the bottom there is two knock outs for the bottom inlets. The box includes a truss fixture and one red half circle which are enabling installation on boards with a thickness of 12- 26 mm. Made of halogen free material (IEC/61249-2-21) and fulfills the requirements of the glow wire test according to the standard IEC/EN60670: 2005 (850 °C).

### Ordering

EAN	6438199004846
Minimum Order Quantity	25 piece
Customs Tariff Number	39259080

### Dimensions

Product Net Width	122 mm
Product Net Height	0.057 m
Product Net Length	97 mm
Product Net Depth / Length	96 mm

Product Net Weight	0.1094 kg
--------------------	-----------

### Container Information

Package Level 1 Units	box 25 piece
Package Level 1 Width	0.255 m
Package Level 1 Height	0.057 m
Package Level 1 Depth / Length	0.375 m
Package Level 1 Gross Weight	3.09 kg
Package Level 1 EAN	6438199004846
Package Level 2 EAN	6438199002286
Package Level 3 Units	1125 piece
Package Level 3 Width	1.2 m
Package Level 3 Height	1.1 m
Package Level 3 Depth / Length	0.8 m

### Additional Information

Color	White
Degree of Protection	IP3X
Design	Device connection box (round/square)
Includes	Mounting plate
Interior Depth	54 mm
Material	Plastic
Mounting Type	Flush mounted (plaster)
Number of Poles	0
Product Main Type	Flush-mounted boxes
Product Name	Mounting box
Shape	Rectangular
Surface Finishing	Untreated
Tube Diameter	16 mm

### Certificates and Declarations (Document Number)

Data Sheet, Technical Information	9AKK10103A2549
Declaration of Conformity - CE	9AKK106713A4627
Instructions and Manuals	9AKK10103A2549
RoHS Information	9AKK106713A4634

### Classifications

ETIM 5	EC002601 - Box/housing for built-in mounting in the wall/ceiling
ETIM 6	EC002601 - Box/housing for built-in mounting in the wall/ceiling
ETIM 7	EC002601 - Box/housing for built-in mounting in the wall/ceiling
WEEE Category	Product Not in WEEE Scope

---

**Categories**

---

Low Voltage Products and Systems → Installation Materials → Flush Mounted Boxes → Plastic Installation Boxes (for WA Inserts)  
→ Hollow Wall

