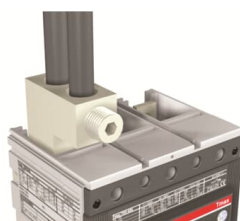


PRODUCT-DETAILS

KIT FC CuAl 2x240mm² T6 630-S6 630 8pcs

KIT FC CuAl 2x240mm² T6 630-S6 630 8pcs



General Information

Extended Product Type	KIT FC CuAl 2x240mm ² T6 630-S6 630 8pcs
Product ID	1SDA013923R1
EAN	8015644139230
Catalog Description	KIT FC CuAl 2x240mm ² T6 630-S6 630 8pcs
Long Description	TERMINALS FRONT FOR CABLES IN COPPER-ALUMINIUM FOUR-POLE S6 400-630 - T6 630

Ordering

EAN	8015644139230
Minimum Order Quantity	1 piece
Customs Tariff Number	85389099

Dimensions

Product Net Weight	0.909 kg
--------------------	----------

Container Information

Package Level 1 Units	1 piece
Package Level 1 Gross Weight	0.909 kg
Package Level 1 EAN	8015644139230

Additional Information

Device	S6 630 (2x240 mm2)
Number of Poles	4
Product Main Type	Accessories for Tmax T
Product Name	Accessory
Product Type	ACC
Standards	IEC
Suitable For	S6 T6
Suitable for Product Class	SACE Tmax T SACE Isomax

Certificates and Declarations (Document Number)

Data Sheet, Technical Information	1SDC210015D0201
Declaration of Conformity - CE	1SDL000165R0001
Environmental Information	1SDC210015D0201
Instructions and Manuals	1SDC210015D0201

Classifications

ETIM 6	EC002019 - Connection vane/phase spreader
ETIM 7	EC002019 - Connection vane/phase spreader
Object Classification Code	Q
WEEE Category	5. Small Equipment (No External Dimension More Than 50 cm)

Categories

Low Voltage Products and Systems → Circuit Breakers → Moulded Case Circuit Breakers → Accessories for Isomax
 Low Voltage Products and Systems → Circuit Breakers → Moulded Case Circuit Breakers → Accessories for Tmax T

